



# SZABO SCANDIC

Part of Europa Biosite

## Produktinformation



Forschungsprodukte & Biochemikalien



Zellkultur & Verbrauchsmaterial



Diagnostik & molekulare Diagnostik



Laborgeräte & Service

Weitere Information auf den folgenden Seiten!  
See the following pages for more information!



### Lieferung & Zahlungsart

siehe unsere [Liefer- und Versandbedingungen](#)

### Zuschläge

- Mindermengenzuschlag
- Trockeneiszuschlag
- Gefahrgutzuschlag
- Expressversand

### SZABO-SCANDIC HandelsgmbH

Quellenstraße 110, A-1100 Wien

T. +43(0)1 489 3961-0

F. +43(0)1 489 3961-7

[mail@szabo-scandic.com](mailto:mail@szabo-scandic.com)

[www.szabo-scandic.com](http://www.szabo-scandic.com)

[linkedin.com/company/szaboscandic](https://www.linkedin.com/company/szaboscandic) 

## GFH91 Recombinant Human IL-22

### Description

Interleukin-22 (IL-22) is an IL-10 family member that is produced by activated dendritic cells and T lymphocytes. IL-22 signals via a heteroduplex receptor consisting of IL-22R and IL-10R $\beta$  chains. IL-22 is a potent mediator of cellular inflammatory responses.

<b>Length</b>	147 / 294 aa
<b>Molecular Weight</b>	16.9 / 33.8 kDa
<b>Source</b>	E. coli
<b>Accession Number</b>	Q9GZX6
<b>Purity</b>	≥95% determined by reducing and non-reducing SDS-PAGE

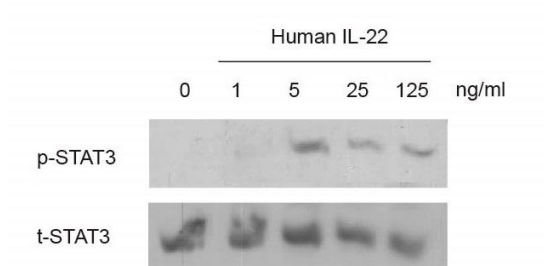
### Specifications

<b>Alternative Names</b>	Interleukin-12, interleukin 12, IL12, IL 12
<b>Biological Activity</b>	Human IL-22 is fully biologically active when compared to standard. The activity is determined by the ability to phosphorylate STAT3 when added to HepG2 cells.
<b>Endotoxin Level</b>	≤1.00 EU/μg as measured by kinetic LAL
<b>Formulation</b>	Lyophilized from a sterile (0.2 micron) filtered aqueous solution containing 10 mM sodium citrate, pH 3.0
<b>AA Sequence</b>	MAPISSHCRL DKSNFQQPYI TNRTFMLAKE ASLADNNTDV RLIGEKLFHG VMSERCYLM KQVLNFTLEE VLFPSDRFQ PYMQEVVFFL ARLSNRLSTC HIEGDDLHIQ RNVQKLKDTV KKLGESGEIK AIGELDLLFM SLRNACI

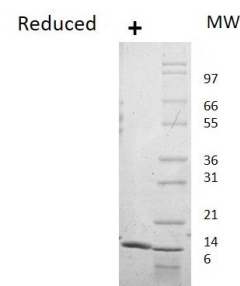
### Preparation and Storage

<b>Reconstitution</b>	Centrifuge vial before opening. When reconstituting the product, gently pipet and wash down the sides of the vial to ensure full recovery of the protein into solution. It is recommended to reconstitute the lyophilized product with sterile 10 mM HCl at 0.1 mg/ml, which can be further diluted into other aqueous solutions.
<b>Stability and Storage</b>	12 months from date of receipt when stored at -20°C to -80°C as supplied. 1 month when stored at 4°C after reconstituting as directed. 3 months when stored at -20°C to -80°C after reconstituting as directed.

### Data



STAT3 phosphorylation is detectable starting at 1 ng/ml.



Reducing (+) conditions in a 4 - 20% Tris-Glycine gel stained with Coomassie Blue, 1 μg of protein was loaded. Human IL-22 has a predicted Mw of 33.8 kDa.