



# SZABO SCANDIC

Part of Europa Biosite

## Produktinformation



Forschungsprodukte & Biochemikalien



Zellkultur & Verbrauchsmaterial



Diagnostik & molekulare Diagnostik



Laborgeräte & Service

Weitere Information auf den folgenden Seiten!  
See the following pages for more information!



### Lieferung & Zahlungsart

siehe unsere [Liefer- und Versandbedingungen](#)

### Zuschläge

- Mindermengenzuschlag
- Trockeneiszuschlag
- Gefahrgutzuschlag
- Expressversand

### SZABO-SCANDIC HandelsgmbH

Quellenstraße 110, A-1100 Wien

T. +43(0)1 489 3961-0

F. +43(0)1 489 3961-7

[mail@szabo-scandic.com](mailto:mail@szabo-scandic.com)

[www.szabo-scandic.com](http://www.szabo-scandic.com)

[linkedin.com/company/szaboscandic](https://www.linkedin.com/company/szaboscandic) 

## GFM16 Recombinant Mouse IFN- $\gamma$

### Description

Interferon  $\gamma$  (IFN- $\gamma$ ) is a type II interferon that is critical during adaptive and innate immune responses to infection. IFN- $\gamma$  is produced by T cells and Natural Killer cells following antigen-specific activation. IFN- $\gamma$  binds IFN- $\gamma$  receptors (IFN- $\gamma$  R1 and IFN- $\gamma$  R2), which are expressed on most immune cells, to activate the JAK-STAT pathway. IFN- $\gamma$  induced signaling increases the expression of class 1 major histocompatibility complex (MHC) molecules. Mouse IFN- $\gamma$  is not cross-reactive with human IFN- $\gamma$ .

<b>Length</b>	134 aa
<b>Molecular Weight</b>	15.7 kDa
<b>Source</b>	E. coli
<b>Accession Number</b>	P01580
<b>Purity</b>	≥95% determined by reducing and non-reducing SDS-PAGE

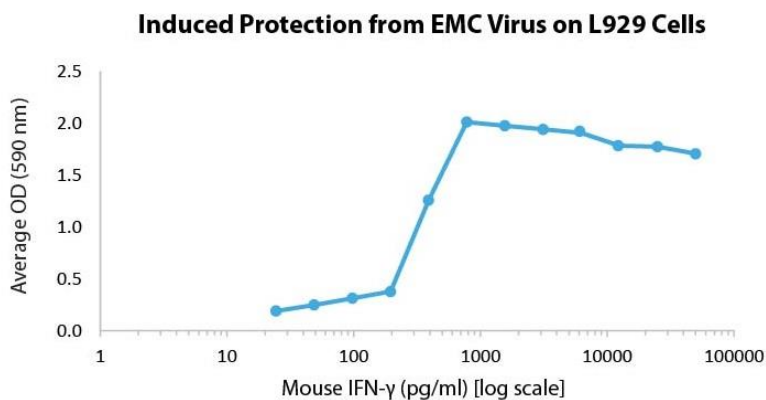
### Specifications

<b>Alternative Names</b>	Interferon- $\gamma$ , interferon-gamma, interferon gamma, type II interferon, T cell interferon, immune Interferon, MAF, IFG, IFI
<b>Biological Activity</b>	Mouse IFN- $\gamma$ is fully biologically active when compared to standard. The activity is determined by the viral CPE assay using EMC virus on L929 cells. The activity corresponds to an expected specific activity of $1.0 \times 10^7$ units/mg.
<b>Endotoxin Level</b>	≤1.00 EU/ $\mu$ g as measured by kinetic LAL
<b>Formulation</b>	Lyophilized from a sterile filtered solution containing 10 mM sodium phosphate, 50 mM sodium chloride, pH 7.5
<b>AA Sequence</b>	MHGTVIESLE SLNNYFNSSG IDVEEKSLFL DIWRNWQKDG DMKILQSQII SFYLRLEFVL KDNQAISNNI SVIESHLITT FFSNSKAKKD AFMSIAKFEV NNPQVQRQAF NELIRVVHQL LPSSLRKRK RSRC

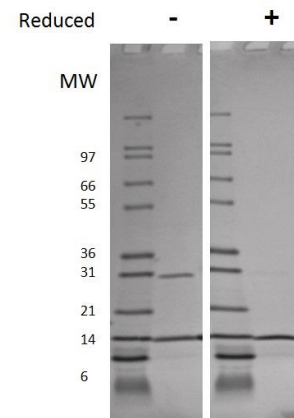
### Preparation and Storage

<b>Reconstitution</b>	Centrifuge vial before opening. When reconstituting the product, gently pipet and wash down the sides of the vial to ensure full recovery of the protein into solution. It is recommended to reconstitute the lyophilized product with sterile water at 0.1 mg/ml, which can be further diluted into other aqueous solutions. If a precipitate is observed, centrifuge the solution thoroughly and use only the soluble fraction (removing it from the precipitate). A 10% overfill has been added to compensate for any loss of protein in the precipitate.
<b>Stability and Storage</b>	12 months from date of receipt when stored at -20°C to -80°C as supplied. 1 month when stored at 4°C after reconstituting as directed. 3 months when stored at -20°C to -80°C after reconstituting as directed.

### Data



Viral CPE assay using EMC virus on L929 cells for Mouse IFN- $\gamma$ .



Non-reducing (-) and reducing (+) conditions in a 4 - 20% Tris-Glycine gel stained with Coomassie Blue. 1  $\mu$ g of protein was loaded in each lane. Mouse IFN- $\gamma$  has a predicted Mw of 15.7 kDa.