



# SZABO SCANDIC

Part of Europa Biosite

## Produktinformation



Forschungsprodukte & Biochemikalien



Zellkultur & Verbrauchsmaterial



Diagnostik & molekulare Diagnostik



Laborgeräte & Service

Weitere Information auf den folgenden Seiten!  
See the following pages for more information!



### Lieferung & Zahlungsart

siehe unsere [Liefer- und Versandbedingungen](#)

### Zuschläge

- Mindermengenzuschlag
- Trockeneiszuschlag
- Gefahrgutzuschlag
- Expressversand

### SZABO-SCANDIC HandelsgmbH

Quellenstraße 110, A-1100 Wien

T. +43(0)1 489 3961-0

F. +43(0)1 489 3961-7

[mail@szabo-scandic.com](mailto:mail@szabo-scandic.com)

[www.szabo-scandic.com](http://www.szabo-scandic.com)

[linkedin.com/company/szaboscandic](https://www.linkedin.com/company/szaboscandic)

## GFM89AF Recombinant Mouse RELM- $\gamma$ (Animal-Free)

### Description

Resistin-like molecule- $\gamma$  (RELM- $\gamma$ ) is a member of the RELM-family of secreted proteins containing C-terminal cysteines. The RELM-family consists of resistin (FIZZ3), RELM- $\alpha$  (FIZZ1), RELM- $\beta$  (FIZZ2), and RELM- $\gamma$  (FIZZ4). RELM- $\gamma$  is secreted by peripheral blood granulocytes, bone marrow, spleen, intestine, and lung. RELM- $\gamma$  functions to promote and regulate promyelocytic differentiation, in addition to regulating nutrient-associated insulin sensitivity in the intestinal tract. Rodents secrete all four RELM-family members, whereas resistin and RELM- $\beta$  are the only RELM-family members found in humans.

This product is produced with no animal derived raw products. All processing and handling employs animal free equipment and animal free protocols.

<b>Length</b>	89 / 178 aa
<b>Molecular Weight</b>	9.4 / 18.9 kDa
<b>Source</b>	E. coli
<b>Accession Number</b>	Q7TM98
<b>Purity</b>	$\geq 95\%$ determined by reducing and non-reducing SDS-PAGE

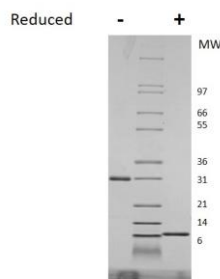
### Specifications

<b>Alternative Names</b>	Resistin-like molecule- $\gamma$ , RELM $\gamma$ , FIZZ4
<b>Biological Activity</b>	There is no biological assay data available but protein content is validated by western blot.
<b>Endotoxin Level</b>	$\leq 1.00$ EU/ $\mu$ g as measured by kinetic LAL
<b>Formulation</b>	Lyophilized from a sterile (0.2 micron) filtered aqueous solution containing 10 mM sodium phosphate, pH 7.5
<b>AA Sequence</b>	MEGTLESIVE KVKKELLANR DDCPSTVTKT FSCTSITASG RLASCPSGMT VTGCACGYGC GSWDIRDGNT CHCQCSTMDW ATARCCQLA

### Preparation and Storage

<b>Reconstitution</b>	Centrifuge vial before opening. When reconstituting the product, gently pipet and wash down the sides of the vial to ensure full recovery of the protein into solution. It is recommended to reconstitute the lyophilized product with sterile water at 0.1 mg/ml, which can be further diluted into other aqueous solutions.
<b>Stability and Storage</b>	12 months from date of receipt when stored at $-20^{\circ}\text{C}$ to $-80^{\circ}\text{C}$ as supplied. 1 month when stored at $4^{\circ}\text{C}$ after reconstituting as directed. 3 months when stored at $-20^{\circ}\text{C}$ to $-80^{\circ}\text{C}$ after reconstituting as directed.

### Data



Non-reducing (-) and reducing (+) conditions in a 4 - 20% Tris-Glycine gel stained with Coomassie Blue. 1  $\mu$ g of protein was loaded in each lane. Mouse RELM- $\gamma$  has a predicted Mw of 18.9 kDa (each monomer is 9.4 kDa). The dimer runs higher in the gel.