



# SZABO SCANDIC

Part of Europa Biosite

## Produktinformation



Forschungsprodukte & Biochemikalien



Zellkultur & Verbrauchsmaterial



Diagnostik & molekulare Diagnostik



Laborgeräte & Service

Weitere Information auf den folgenden Seiten!  
See the following pages for more information!



### Lieferung & Zahlungsart

siehe unsere [Liefer- und Versandbedingungen](#)

### Zuschläge

- Mindermengenzuschlag
- Trockeneiszuschlag
- Gefahrgutzuschlag
- Expressversand

### SZABO-SCANDIC HandelsgmbH

Quellenstraße 110, A-1100 Wien

T. +43(0)1 489 3961-0

F. +43(0)1 489 3961-7

[mail@szabo-scandic.com](mailto:mail@szabo-scandic.com)

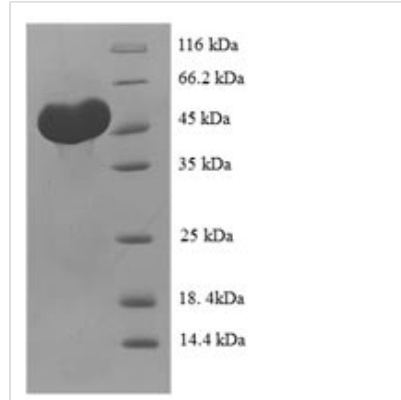
[www.szabo-scandic.com](http://www.szabo-scandic.com)

[linkedin.com/company/szaboscandic](https://www.linkedin.com/company/szaboscandic) 



# Recombinant Human C-type lectin domain family 18 member A(CLEC18A)

<b>Product Code</b>	CSB-EP005521HU
<b>Storage</b>	The shelf life is related to many factors, storage state, buffer ingredients, storage temperature and the stability of the protein itself. Generally, the shelf life of liquid form is 6 months at -20°C/-80°C. The shelf life of lyophilized form is 12 months at -20°C/-80°C.
<b>Uniprot No.</b>	A5D8T8
<b>Alias</b>	Mannose receptor-like protein 2
<b>Product Type</b>	Recombinant Protein
<b>Immunogen Species</b>	Homo sapiens (Human)
<b>Purity</b>	Greater than 90% as determined by SDS-PAGE.
<b>Sequence</b>	EVWPPQLQEAPMAGALNRKESFLLLSLHNRLRSWVQPPAADMRRLDWSDS LAQLAQARAALCGTPTPSLASGLWRTLQVGWNMQLLPAGLVSFVEVSLWFA EGQRYSHAAGECARNATCTHYTQLVWATSSQLGCGRHLC SAGQAAIEAFVC AYSPRGNWEVNGKTIVPYKKGAWCSLCTASVSGCFKAWDHAGGLCEVPRNP CRMSCQNHGRLNISTCHCHCPPGYTGRYCQVRCSLQCVHGRFREEECSCVC DIGYGGAQCATKVHFPFHTCDLRIDGDCFMVSSEADTYRARMKCKQRKGGVL AQIKSQKVQDILAFYLGRLETTNEVIDSDFETRNFWIGLTYKTAKDSFRWATGE HQAFTSFAFGQPDNHGFGNCVELQASAAFNWWDQRCKTRNRYICQFAQEHIS RWGPGS
<b>Lead Time</b>	3-7 business days
<b>Research Area</b>	Others
<b>Source</b>	E.coli
<b>Gene Names</b>	CLEC18A
<b>Expression Region</b>	27-446aa
<b>Notes</b>	Repeated freezing and thawing is not recommended. Store working aliquots at 4°C for up to one week.
<b>Tag Info</b>	N-terminal 6xHis-SUMO-tagged
<b>Mol. Weight</b>	62.9kDa
<b>Protein Description</b>	Full Length of Mature Protein
<b>Image</b>	



(Tris-Glycine gel) Discontinuous SDS-PAGE (reduced) with 5% enrichment gel and 15% separation gel.

## Reconstitution

We recommend that this vial be briefly centrifuged prior to opening to bring the contents to the bottom. Please reconstitute protein in deionized sterile water to a concentration of 0.1-1.0 mg/mL. We recommend to add 5-50% of glycerol (final concentration) and aliquot for long-term storage at -20°C/-80°C. Our default final concentration of glycerol is 50%. Customers could use it as reference.