



SZABO SCANDIC

Part of Europa Biosite

Produktinformation



Forschungsprodukte & Biochemikalien



Zellkultur & Verbrauchsmaterial



Diagnostik & molekulare Diagnostik



Laborgeräte & Service

Weitere Information auf den folgenden Seiten!
See the following pages for more information!



Lieferung & Zahlungsart

siehe unsere [Liefer- und Versandbedingungen](#)

Zuschläge

- Mindermengenzuschlag
- Trockeneiszuschlag
- Gefahrgutzuschlag
- Expressversand

SZABO-SCANDIC HandelsgmbH

Quellenstraße 110, A-1100 Wien

T. +43(0)1 489 3961-0

F. +43(0)1 489 3961-7

mail@szabo-scandic.com

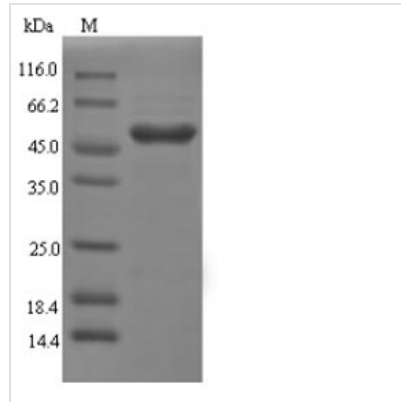
www.szabo-scandic.com

[linkedin.com/company/szaboscandic](https://www.linkedin.com/company/szaboscandic) 

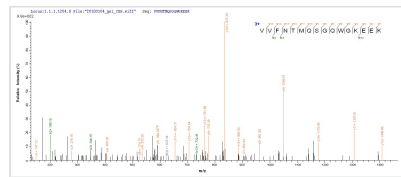


Recombinant Rat Galectin-4(Lgals4)

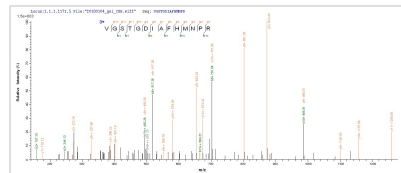
Product Code	CSB-EP012889RA
Relevance	Galectin that binds lactose and a related range of sugars.
Storage	The shelf life is related to many factors, storage state, buffer ingredients, storage temperature and the stability of the protein itself. Generally, the shelf life of liquid form is 6 months at -20°C/-80°C. The shelf life of lyophilized form is 12 months at -20°C/-80°C.
Uniprot No.	P38552
Alias	L-36 lactose-binding protein Short name: L36LBP Lactose-binding lectin 4
Product Type	Recombinant Protein
Immunogen Species	Rattus norvegicus (Rat)
Purity	Greater than 90% as determined by SDS-PAGE.
Sequence	MAYVPAPGYQPTYNPTLPYKRPIPGGLSVGMSIYIQGIKDNMRRFHVNFVAVG QDEGADIAFHFNPRFDGWDKVVFNMTMQSGQWGKEEKKKSMFPQKGHHFELV FMVMSEHYKVVVNGTTPFYEYGHRLPLQMVTHLQVDGDLELQSINFLGGQPAA SQYPGTMTIPAYPSAGYNPPQMNSLPVMAGPPIFNPPVYVGTLLQGGLTARR TIIKGYVLPTAKNLIINFKVGSTGDIAFHMNPRIGDCVVRNSYMNGSWGSEERK IPYNPFGAGQFFDLSIRCGTDRFKVFANGQHLLDFSHRFQAFQRVDMLEIKGDI TLSYVQI
Lead Time	3-7 business days
Research Area	Others
Source	E.coli
Gene Names	Lgals4
Expression Region	1-324aa
Notes	Repeated freezing and thawing is not recommended. Store working aliquots at 4°C for up to one week.
Tag Info	N-terminal 6xHis-SUMO-tagged
Mol. Weight	52.3kDa
Protein Description	Full Length
Image	



(Tris-Glycine gel) Discontinuous SDS-PAGE (reduced) with 5% enrichment gel and 15% separation gel.



Based on the SEQUEST from database of E.coli host and target protein, the LC-MS/MS Analysis result of CSB-EP012889RA could indicate that this peptide derived from E.coli-expressed *Rattus norvegicus* (Rat) Lgals4.



Based on the SEQUEST from database of E.coli host and target protein, the LC-MS/MS Analysis result of CSB-EP012889RA could indicate that this peptide derived from E.coli-expressed *Rattus norvegicus* (Rat) Lgals4.

Reconstitution

We recommend that this vial be briefly centrifuged prior to opening to bring the contents to the bottom. Please reconstitute protein in deionized sterile water to a concentration of 0.1-1.0 mg/mL. We recommend to add 5-50% of glycerol (final concentration) and aliquot for long-term storage at -20°C/-80°C. Our default final concentration of glycerol is 50%. Customers could use it as reference.