



# SZABO SCANDIC

Part of Europa Biosite

## Produktinformation



Forschungsprodukte & Biochemikalien



Zellkultur & Verbrauchsmaterial



Diagnostik & molekulare Diagnostik



Laborgeräte & Service

Weitere Information auf den folgenden Seiten!  
See the following pages for more information!



### Lieferung & Zahlungsart

siehe unsere [Liefer- und Versandbedingungen](#)

### Zuschläge

- Mindermengenzuschlag
- Trockeneiszuschlag
- Gefahrgutzuschlag
- Expressversand

### SZABO-SCANDIC HandelsgmbH

Quellenstraße 110, A-1100 Wien

T. +43(0)1 489 3961-0

F. +43(0)1 489 3961-7

[mail@szabo-scandic.com](mailto:mail@szabo-scandic.com)

[www.szabo-scandic.com](http://www.szabo-scandic.com)

[linkedin.com/company/szaboscandic](https://www.linkedin.com/company/szaboscandic) 



# Recombinant Human Macrophage mannose receptor 1 (MRC1), partial

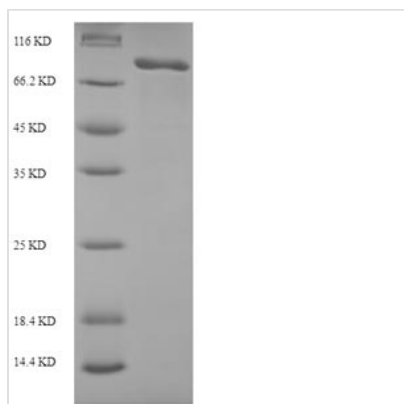
<b>Product Code</b>	CSB-EP014783HU
<b>Relevance</b>	Mediates the endocytosis of glycoproteins by macrophages. Binds both sulfated and non-sulfated polysaccharide chains. Acts as phagocytic receptor for bacteria, fungi and other pathogens.
<b>Storage</b>	The shelf life is related to many factors, storage state, buffer ingredients, storage temperature and the stability of the protein itself. Generally, the shelf life of liquid form is 6 months at -20°C/-80°C. The shelf life of lyophilized form is 12 months at -20°C/-80°C.
<b>Uniprot No.</b>	P22897
<b>Alias</b>	C-type lectin domain family 13 member DC-type lectin domain family 13 member D-like;Macrophage mannose receptor 1-like protein 1; CD206
<b>Product Type</b>	Recombinant Protein
<b>Immunogen Species</b>	Homo sapiens (Human)
<b>Purity</b>	Greater than 90% as determined by SDS-PAGE.
<b>Sequence</b>	RTSLCFKLYAKGKHEKKTWFESRDFCRALGGDLASINNKEEQQTIWRLITASG SYHKLFWLGLTYGSPSEGFTWSDGSPVSYENWAYGEPNNYQNVEYCGELKG DPTMSWINDINCEHLNNWICQIQKGQTPKPEPTPAPQDNPPVTEDGWVVIYKDY QYYFSKEKETMDNARAFCKRNFGLVSIQSESEKKFLWKYVNRNDAQSAYFI GLLISLDKFFAWMDGSKVDYVSWATGEPNFANEDENCVTMYSNSGFWDIN CGYPNAFICQRHNSSINATTVMPTMPSVPSGCKEGWNFYSNKCFKIFGMEE ERKNWQEARAKACIGFGGNLVSIQNEKEQAFLTYHMKDSTFSAWTGLNDVNSE HTFLWTDGRGVHYTNWGKGYPGGRRSSLSYEDADCVVIIGGASNEAGKWMD DTCDSKRGYICQTRSDPSLTNPPATIQTDFVVKYGKSSYSLMRQKFQWHEAE TYCKLHNSLIASILDYPYNAFAWLQMETSNERVWIALNSNLTDNQYTWTDKWR VRYTNWAADEPKLKSACVYLDLDGYWKTAHCNESFYFLCK
<b>Research Area</b>	Immunology
<b>Source</b>	E.coli
<b>Target Names</b>	MRC1
<b>Protein Names</b>	Recommended name: Macrophage mannose receptor 1 Short name= MMR Alternative name(s): C-type lectin domain family 13 member D C-type lectin domain family 13 member D-like Macrophage mannose receptor 1-like protein 1 CD_antigen=
<b>Expression Region</b>	655-1213aa
<b>Notes</b>	Repeated freezing and thawing is not recommended. Store working aliquots at 4°C for up to one week.
<b>Tag Info</b>	N-terminal 6xHis-SUMO-tagged



**Mol. Weight** 80.4kDa

**Protein Length** Partial

**Image**



(Tris-Glycine gel) Discontinuous SDS-PAGE (reduced) with 5% enrichment gel and 15% separation gel.

**Reconstitution**

We recommend that this vial be briefly centrifuged prior to opening to bring the contents to the bottom. Please reconstitute protein in deionized sterile water to a concentration of 0.1-1.0 mg/mL. We recommend to add 5-50% of glycerol (final concentration) and aliquot for long-term storage at -20°C/-80°C. Our default final concentration of glycerol is 50%. Customers could use it as reference.

**Shelf Life**

The shelf life is related to many factors, storage state, buffer ingredients, storage temperature and the stability of the protein itself. Generally, the shelf life of liquid form is 6 months at -20°C/-80°C. The shelf life of lyophilized form is 12 months at -20°C/-80°C.