



SZABO SCANDIC

Part of Europa Biosite

Produktinformation



Forschungsprodukte & Biochemikalien



Zellkultur & Verbrauchsmaterial



Diagnostik & molekulare Diagnostik



Laborgeräte & Service

Weitere Information auf den folgenden Seiten!
See the following pages for more information!



Lieferung & Zahlungsart

siehe unsere [Liefer- und Versandbedingungen](#)

Zuschläge

- Mindermengenzuschlag
- Trockeneiszuschlag
- Gefahrgutzuschlag
- Expressversand

SZABO-SCANDIC HandelsgmbH

Quellenstraße 110, A-1100 Wien

T. +43(0)1 489 3961-0

F. +43(0)1 489 3961-7

mail@szabo-scandic.com

www.szabo-scandic.com

[linkedin.com/company/szaboscandic](https://www.linkedin.com/company/szaboscandic) 



Recombinant Human Macrophage mannose receptor 1(MRC1),partial

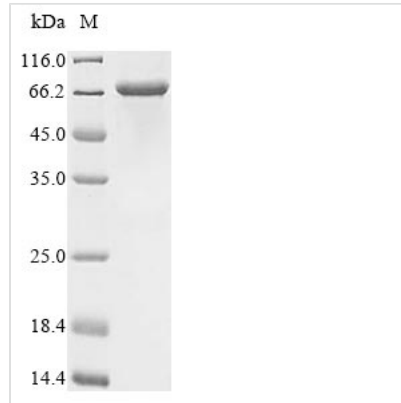
Product Code	CSB-EP014783HUa0
Relevance	Mediates the endocytosis of glycoproteins by macrophages. Binds both sulfated and non-sulfated polysaccharide chains. (Microbial infection) Acts as phagocytic receptor for bacteria, fungi and other pathogens. Acts as a receptor for Dengue virus envelope protein E. Interacts with hepatitis B virus envelope protein
Storage	The shelf life is related to many factors, storage state, buffer ingredients, storage temperature and the stability of the protein itself. Generally, the shelf life of liquid form is 6 months at -20°C/-80°C. The shelf life of lyophilized form is 12 months at -20°C/-80°C.
Uniprot No.	P22897
Product Type	Recombinant Protein
Immunogen Species	Homo sapiens (Human)
Purity	Greater than 85% as determined by SDS-PAGE.
Sequence	RTSLCFKLYAKGKHEKKTWFESRDFCRALGGDLASINNKEEQQTWRLITASG SYHKLFWLGLTYGSPSEGFTWSDGSPVSYENWAYGEPNNYQNVEYCGELKG DPTMSWINDINCEHLNNWICQIQKGQTPKPEPTPAPQDNPPVTEDGWVIYKDY QYYFSKEKETMDNARAFCKRNFGDLVSIQSESEKKFLWKYVNRNDAQSAYFI GLLISLDKKAFAWMDGSKVDYVSWATGEPNFANEDENCVTMYSNSGFWDIN CGYPNAFICQRHNSSINATTVMPTMPSVPSGCKEGWNFYSNKCFKIFGFME ERKNWQEARAKACIGFGNLVSIQNEKEQAFLTYHMKDSTFSAWTGLNDVNSE HTFLWTDGRGVHYTNWKGKYPGGRRSSLSYEDADCVVIIGGASNEAGKWMD DTCDSKRGYICQTRSDPSLTNPPATIQTDFVVKYGKSSYSLMRQKFQWHEAE TYCKLHNSLIASILDYPYNAFAWLQMETSNERVWIALNSNLTDNQYTWTDKWR VRYTNWAADEPKLKSACVYLDLDGYWKTAHCNESFYFLCK
Lead Time	3-7 business days
Research Area	Immunology
Source	E.coli
Gene Names	MRC1
Protein Names	C-type lectin domain family 13 member D C-type lectin domain family 13 member D-like Human mannose receptor Short name:hMR Macrophage mannose receptor 1-like protein 1 CD_antigen: CD206 CLEC13D, CLEC13DL, MRC1L1
Expression Region	655-1213aa
Notes	Repeated freezing and thawing is not recommended. Store working aliquots at 4°C for up to one week.
Tag Info	N-terminal 6xHis-tagged



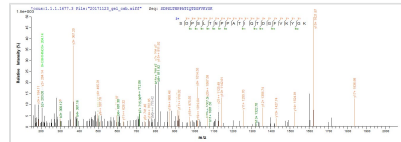
Mol. Weight 69.9 kDa

Protein Description Partial

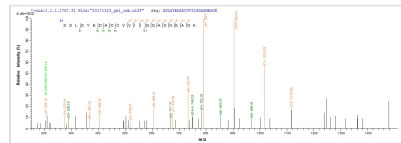
Image



(Tris-Glycine gel) Discontinuous SDS-PAGE (reduced) with 5% enrichment gel and 15% separation gel.



Based on the SEQUEST from database of E.coli host and target protein, the LC-MS/MS Analysis result of CSB-EP014783HUa0 could indicate that this peptide derived from E.coli-expressed Homo sapiens (Human) MRC1.



Based on the SEQUEST from database of E.coli host and target protein, the LC-MS/MS Analysis result of CSB-EP014783HUa0 could indicate that this peptide derived from E.coli-expressed Homo sapiens (Human) MRC1.

Reconstitution

We recommend that this vial be briefly centrifuged prior to opening to bring the contents to the bottom. Please reconstitute protein in deionized sterile water to a concentration of 0.1-1.0 mg/mL. We recommend to add 5-50% of glycerol (final concentration) and aliquot for long-term storage at -20°C/-80°C. Our default final concentration of glycerol is 50%. Customers could use it as reference.