



SZABO SCANDIC

Part of Europa Biosite

Produktinformation



Forschungsprodukte & Biochemikalien



Zellkultur & Verbrauchsmaterial



Diagnostik & molekulare Diagnostik



Laborgeräte & Service

Weitere Information auf den folgenden Seiten!
See the following pages for more information!



Lieferung & Zahlungsart

siehe unsere [Liefer- und Versandbedingungen](#)

Zuschläge

- Mindermengenzuschlag
- Trockeneiszuschlag
- Gefahrgutzuschlag
- Expressversand

SZABO-SCANDIC HandelsgmbH

Quellenstraße 110, A-1100 Wien

T. +43(0)1 489 3961-0

F. +43(0)1 489 3961-7

mail@szabo-scandic.com

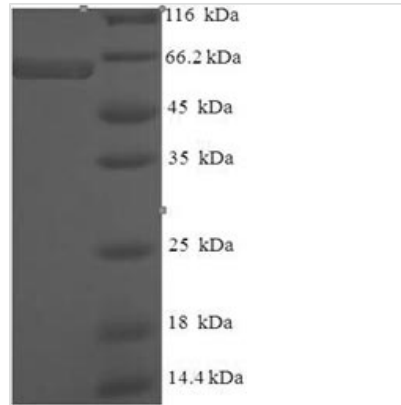
www.szabo-scandic.com

[linkedin.com/company/szaboscandic](https://www.linkedin.com/company/szaboscandic) 



Recombinant Human Protein ERGIC-53-like(LMAN1L)

Product Code	CSB-EP862055HU
Storage	The shelf life is related to many factors, storage state, buffer ingredients, storage temperature and the stability of the protein itself. Generally, the shelf life of liquid form is 6 months at -20°C/-80°C. The shelf life of lyophilized form is 12 months at -20°C/-80°C.
Uniprot No.	Q9HAT1
Alias	ERGIC53-like protein;Lectin mannose-binding 1-like ;LMAN1-like protein
Product Type	Recombinant Protein
Immunogen Species	Homo sapiens (Human)
Purity	Greater than 90% as determined by SDS-PAGE.
Sequence	GCPPLRRFEYKLSFKGPRRLALPGAGIPFWSHHGDAILGLEEVRLTPSMRNRSG AVWSRASVPFSAWEVEVQMRVTGLGRRGAQGMVWYTRGRGHVGSVLGG LASWDGIGIFFDSPAEDTQDSPAIRVLASDGHIPSEQPGDGASQGLGSCHWDF RNRPHFRARITYWGQRLRMSLNSGLTPSDPGEFCVDVGPLLLVPGGFFGVS AATGTLADDHDVLSFLTFSLSEPSPEVPPQPFLEMQQLRLARQLEGLWARLGL GTREDVTPKSDSEAQGEGERLFDLEETLGRHRRILQALRGLSKQLAQAERQW KKQLGPPGQARPDGGWALDASCQIPSTPGRGGHLSMSLNKDSAKVGALLHG QWTLQLALQEMRDAAVRMAAEAQVSYLPVGIHHFLELDHILGLLQEELRGPA KAAAKAPRPPGQPPRASSCLQ
Lead Time	Delivery time may differ from different purchasing way or location, please kindly consult your local distributors for specific delivery time.
Research Area	Signal Transduction
Source	E.coli
Gene Names	LMAN1L
Expression Region	26-462aa
Notes	Repeated freezing and thawing is not recommended. Store working aliquots at 4°C for up to one week.
Tag Info	N-terminal 6xHis-SUMO-tagged
Mol. Weight	63.5kDa
Protein Description	Full Length of Mature Protein
Image	



(Tris-Glycine gel) Discontinuous SDS-PAGE (reduced) with 5% enrichment gel and 15% separation gel.

Reconstitution

We recommend that this vial be briefly centrifuged prior to opening to bring the contents to the bottom. Please reconstitute protein in deionized sterile water to a concentration of 0.1-1.0 mg/mL. We recommend to add 5-50% of glycerol (final concentration) and aliquot for long-term storage at -20°C/-80°C. Our default final concentration of glycerol is 50%. Customers could use it as reference.