



SZABO SCANDIC

Part of Europa Biosite

Produktinformation



Forschungsprodukte & Biochemikalien



Zellkultur & Verbrauchsmaterial



Diagnostik & molekulare Diagnostik



Laborgeräte & Service

Weitere Information auf den folgenden Seiten!
See the following pages for more information!



Lieferung & Zahlungsart

siehe unsere [Liefer- und Versandbedingungen](#)

Zuschläge

- Mindermengenzuschlag
- Trockeneiszuschlag
- Gefahrgutzuschlag
- Expressversand

SZABO-SCANDIC HandelsgmbH

Quellenstraße 110, A-1100 Wien

T. +43(0)1 489 3961-0

F. +43(0)1 489 3961-7

mail@szabo-scandic.com

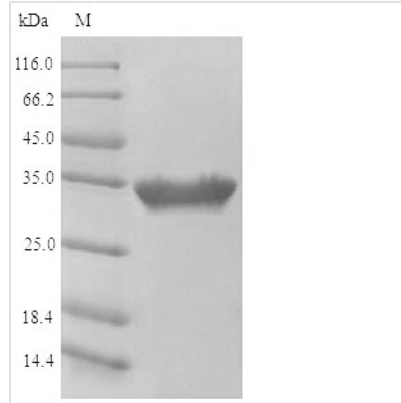
www.szabo-scandic.com

[linkedin.com/company/szaboscandic](https://www.linkedin.com/company/szaboscandic) 



Recombinant Mouse C-type lectin domain family 4 member K(Cd207),partial

Product Code	CSB-MP837695MO
Abbreviation	Cd207
Storage	The shelf life is related to many factors, storage state, buffer ingredients, storage temperature and the stability of the protein itself. Generally, the shelf life of liquid form is 6 months at -20°C/-80°C. The shelf life of lyophilized form is 12 months at -20°C/-80°C.
Uniprot No.	Q8VBX4
Storage Buffer	Tris-based buffer?50% glycerol
Product Type	Recombinant Proteins
Immunogen Species	Mus musculus (Mouse)
Purity	Greater than 85% as determined by SDS-PAGE.
Sequence	QAVFYPRLMGKILDVKSDAQMLKGRVDNISTLGSDLKTERGRVDDAEVQMQIV NTTLKRVRSQILSLETSMKIANDQLQILTMSWGEVDSLSAKIPELKRDLDKASAL NTKVQGLQNSLENVNKLKQSQSDILEMVARGWKYFSGNFYYFSRTPKTWYSA EQFCISRKAHLTSVSSSESEKFLYKAADGIPHWIGLTKAGSEGDWYWVDQTSF NKEQSRRFWIPGEPNAGNNEHCANIRVSALKCWNDGPCDNTFLFICKRPYV QTTE
Research Area	Metabolism
Source	Mammalian cell
Gene Names	Cd207
Protein Names	Recommended name: C-type lectin domain family 4 member K Alternative name(s): Langerin CD_antigen= CD207
Expression Region	63-331aa
Notes	Repeated freezing and thawing is not recommended. Store working aliquots at 4°C for up to one week.
Tag Info	N-terminal 10xHis-tagged
Mol. Weight	34.8 kDa
Protein Description	Partial
Image	



(Tris-Glycine gel) Discontinuous SDS-PAGE (reduced) with 5% enrichment gel and 15% separation gel.