



SZABO SCANDIC

Part of Europa Biosite

Produktinformation



Forschungsprodukte & Biochemikalien



Zellkultur & Verbrauchsmaterial



Diagnostik & molekulare Diagnostik



Laborgeräte & Service

Weitere Information auf den folgenden Seiten!
See the following pages for more information!



Lieferung & Zahlungsart

siehe unsere [Liefer- und Versandbedingungen](#)

Zuschläge

- Mindermengenzuschlag
- Trockeneiszuschlag
- Gefahrgutzuschlag
- Expressversand

SZABO-SCANDIC HandelsgmbH

Quellenstraße 110, A-1100 Wien

T. +43(0)1 489 3961-0

F. +43(0)1 489 3961-7

mail@szabo-scandic.com

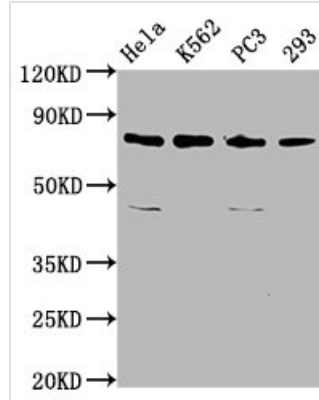
www.szabo-scandic.com

[linkedin.com/company/szaboscandic](https://www.linkedin.com/company/szaboscandic) 



INTS13 Antibody

Product Code	CSB-PA868331LA01HU
Abbreviation	Integrator complex subunit 13
Storage	Upon receipt, store at -20°C or -80°C. Avoid repeated freeze.
Uniprot No.	Q9NVM9
Immunogen	Recombinant Human Integrator complex subunit 13 protein (573-706AA)
Raised In	Rabbit
Species Reactivity	Human
Tested Applications	ELISA, WB, IP; Recommended dilution: WB:1:500-1:5000, IP:1:200-1:2000
Relevance	Crucial regulator of the mitotic cell cycle and development. At prophase, required for dynein anchoring to the nuclear envelope important for proper centrosome-nucleus coupling. At G2/M phase, may be required for proper spindle formation and execution of cytokinesis. Probable component of the Integrator (INT) complex, a complex involved in the small nuclear RNAs (snRNA) U1 and U2 transcription and in their 3'-box-dependent processing (PubMed:23904267).
Form	Liquid
Conjugate	Non-conjugated
Storage Buffer	Preservative: 0.03% Proclin 300 Constituents: 50% Glycerol, 0.01M PBS, pH 7.4
Purification Method	>95%, Protein G purified
Isotype	IgG
Clonality	Polyclonal
Alias	Integrator complex subunit 13 (Cell cycle regulator Mat89Bb homolog) (Germ cell tumor 1) (Protein asunder homolog) (Sarcoma antigen NY-SAR-95), INTS13, ASUN C12orf11 GCT1
Species	Homo sapiens (Human)
Research Area	Cell Biology
Target Names	INTS13
Image	


Western Blot

Positive WB detected in: HeLa whole cell lysate, K562 whole cell lysate, PC-3 whole cell lysate, 293 whole cell lysate

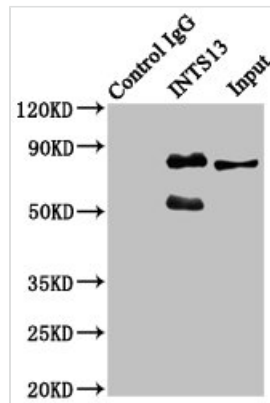
All lanes: INTS13 antibody at 3.4µg/ml

Secondary

Goat polyclonal to rabbit IgG at 1/50000 dilution

Predicted band size: 81, 69 kDa

Observed band size: 81 kDa



Immunoprecipitating INTS13 in HeLa whole cell lysate

Lane 1: Rabbit control IgG instead of CSB-PA868331LA01HU in HeLa whole cell lysate. For western blotting, a HRP-conjugated Protein G antibody was used as the secondary antibody (1/2000)

Lane 2: CSB-PA868331LA01HU (6µg) + HeLa whole cell lysate (500µg)

Lane 3: HeLa whole cell lysate (20µg)