



SZABO SCANDIC

Part of Europa Biosite

Produktinformation



Forschungsprodukte & Biochemikalien



Zellkultur & Verbrauchsmaterial



Diagnostik & molekulare Diagnostik



Laborgeräte & Service

Weitere Information auf den folgenden Seiten!
See the following pages for more information!



Lieferung & Zahlungsart

siehe unsere [Liefer- und Versandbedingungen](#)

Zuschläge

- Mindermengenzuschlag
- Trockeneiszuschlag
- Gefahrgutzuschlag
- Expressversand

SZABO-SCANDIC HandelsgmbH

Quellenstraße 110, A-1100 Wien

T. +43(0)1 489 3961-0

F. +43(0)1 489 3961-7

mail@szabo-scandic.com

www.szabo-scandic.com

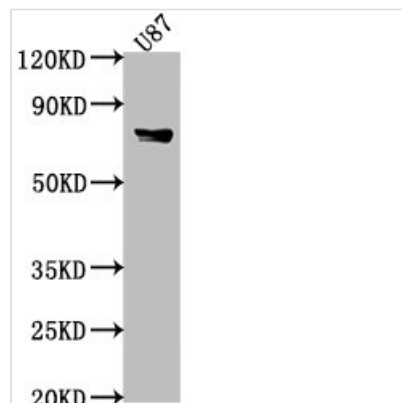
[linkedin.com/company/szaboscandic](https://www.linkedin.com/company/szaboscandic) 



FEM1B Antibody

Product Code	CSB-PA891718LA01HU
Storage	Upon receipt, store at -20°C or -80°C. Avoid repeated freeze.
Uniprot No.	Q9UK73
Immunogen	Recombinant Human Protein fem-1 homolog B protein (400-627AA)
Raised In	Rabbit
Species Reactivity	Human, Mouse
Tested Applications	ELISA, WB; Recommended dilution: WB:1:1000-1:5000
Relevance	Component of an E3 ubiquitin-protein ligase complex, in which it may act as a substrate recognition subunit. Involved in apoptosis by acting as a death receptor-associated protein that mediates apoptosis. Also involved in glucose homeostasis in pancreatic islet. Functions as an adapter/mediator in replication stress-induced signaling that leads to the activation of CHEK1.
Form	Liquid
Conjugate	Non-conjugated
Storage Buffer	Preservative: 0.03% Proclin 300 Constituents: 50% Glycerol, 0.01M PBS, pH 7.4
Purification Method	>95%, Protein G purified
Isotype	IgG
Clonality	Polyclonal
Alias	Protein fem-1 homolog B (FEM1b) (FEM1-beta) (Fem-1-like death receptor-binding protein alpha) (Fem-1-like in apoptotic pathway protein alpha) (F1A-alpha), FEM1B, F1AA KIAA0396
Immunogen Species	Homo sapiens (Human)
Research Area	Cell Biology
Target Names	FEM1B

Image



Western Blot

Positive WB detected in: U87 whole cell lysate, Mouse heart tissue

All lanes: FEM1B antibody at 1:2000

Secondary

Goat polyclonal to rabbit IgG at 1/50000 dilution

Predicted band size: 71 kDa

Observed band size: 71 kDa