



SZABO SCANDIC

Part of Europa Biosite

Produktinformation



Forschungsprodukte & Biochemikalien



Zellkultur & Verbrauchsmaterial



Diagnostik & molekulare Diagnostik



Laborgeräte & Service

Weitere Information auf den folgenden Seiten!
See the following pages for more information!



Lieferung & Zahlungsart

siehe unsere [Liefer- und Versandbedingungen](#)

Zuschläge

- Mindermengenzuschlag
- Trockeneiszuschlag
- Gefahrgutzuschlag
- Expressversand

SZABO-SCANDIC HandelsgmbH

Quellenstraße 110, A-1100 Wien

T. +43(0)1 489 3961-0

F. +43(0)1 489 3961-7

mail@szabo-scandic.com

www.szabo-scandic.com

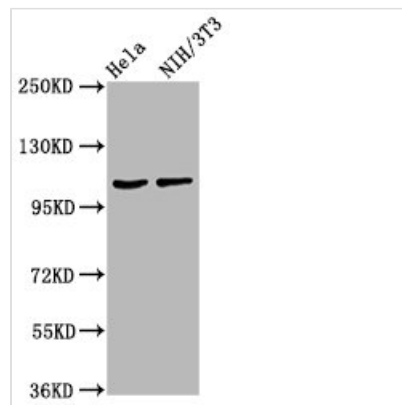
[linkedin.com/company/szaboscandic](https://www.linkedin.com/company/szaboscandic) 



MKL2 Antibody

Product Code	CSB-PA891962LA01HU
Abbreviation	MKL/myocardin-like protein 2
Storage	Upon receipt, store at -20°C or -80°C. Avoid repeated freeze.
Uniprot No.	Q9ULH7
Immunogen	Recombinant Human MKL/myocardin-like protein 2 protein (164-313AA)
Raised In	Rabbit
Species Reactivity	Human, Mouse
Tested Applications	ELISA, WB, IHC; Recommended dilution: WB:1:500-1:5000, IHC:1:500-1:1000
Relevance	Acts as a transcriptional coactivator of serum response factor (SRF). Required for skeletal myogenic differentiation.
Form	Liquid
Conjugate	Non-conjugated
Storage Buffer	Preservative: 0.03% Proclin 300 Constituents: 50% Glycerol, 0.01M PBS, pH 7.4
Purification Method	>95%, Protein G purified
Isotype	IgG
Clonality	Polyclonal
Alias	MKL/myocardin-like protein 2 (Megakaryoblastic leukemia 2) (Myocardin-related transcription factor B) (MRTF-B), MKL2, KIAA1243 MRTFB
Species	Homo sapiens (Human)
Research Area	Epigenetics and Nuclear Signaling
Target Names	MKL2

Image



Western Blot

Positive WB detected in: HeLa whole cell lysate, NIH/3T3 whole cell lysate

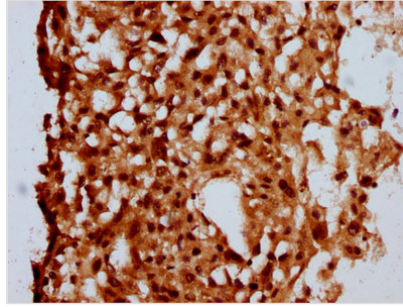
All lanes: MKL2 antibody at 4.2µg/ml

Secondary

Goat polyclonal to rabbit IgG at 1/50000 dilution

Predicted band size: 119, 43, 52, 115, 120 kDa

Observed band size: 119 kDa



IHC image of CSB-PA891962LA01HU diluted at 1:500 and staining in paraffin-embedded human melanoma performed on a Leica BondTM system. After dewaxing and hydration, antigen retrieval was mediated by high pressure in a citrate buffer (pH 6.0). Section was blocked with 10% normal goat serum 30min at RT. Then primary antibody (1% BSA) was incubated at 4°C overnight. The primary is detected by a biotinylated secondary antibody and visualized using an HRP conjugated SP system.