



SZABO SCANDIC

Part of Europa Biosite

Produktinformation



Forschungsprodukte & Biochemikalien



Zellkultur & Verbrauchsmaterial



Diagnostik & molekulare Diagnostik



Laborgeräte & Service

Weitere Information auf den folgenden Seiten!
See the following pages for more information!



Lieferung & Zahlungsart

siehe unsere [Liefer- und Versandbedingungen](#)

Zuschläge

- Mindermengenzuschlag
- Trockeneiszuschlag
- Gefahrgutzuschlag
- Expressversand

SZABO-SCANDIC HandelsgmbH

Quellenstraße 110, A-1100 Wien

T. +43(0)1 489 3961-0

F. +43(0)1 489 3961-7

mail@szabo-scandic.com

www.szabo-scandic.com

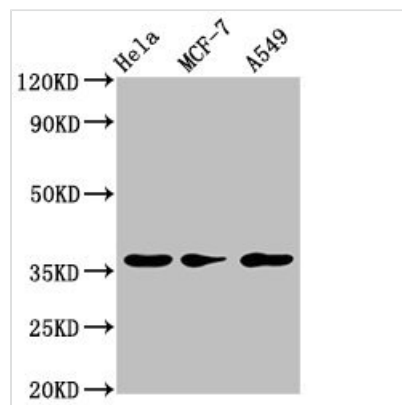
[linkedin.com/company/szaboscandic](https://www.linkedin.com/company/szaboscandic) 



RCE1 Antibody

| | |
|----------------------------|-----------------------------------------------------------------------------------------------------------------------------------------------------------------------------------------|
| Product Code | CSB-PA896686LA01HU |
| Storage | Upon receipt, store at -20°C or -80°C. Avoid repeated freeze. |
| Uniprot No. | Q9Y256 |
| Immunogen | Recombinant Human CAAX prenyl protease 2 protein (133-185AA) |
| Raised In | Rabbit |
| Species Reactivity | Human |
| Tested Applications | ELISA, WB; Recommended dilution: WB:1:500-1:5000 |
| Relevance | Proteolytically removes the C-terminal three residues of farnesylated and geranylated proteins. Seems to be able to process K-Ras, N-Ras, H-Ras, RAP1B and G-gamma-1 (PubMed:10085068). |
| Form | Liquid |
| Conjugate | Non-conjugated |
| Storage Buffer | Preservative: 0.03% Proclin 300 Constituents: 50% Glycerol, 0.01M PBS, pH 7.4 |
| Purification Method | >95%, Protein G purified |
| Isotype | IgG |
| Clonality | Polyclonal |
| Alias | CAAX prenyl protease 2, Farnesylated proteins-converting enzyme 2, FACE-2, Prenyl protein-specific endoprotease 2, RCE1 homolog, hRCE1, RCE1, FACE2, RCE1A, RCE1B |
| Species | Homo sapiens (Human) |
| Research Area | Tags & Cell Markers |
| Target Names | RCE1 |

Image



Western Blot

Positive WB detected in: Hela whole cell lysate, MCF-7 whole cell lysate, A549 whole cell lysate

All lanes: RCE1 antibody at 3.2µg/ml

Secondary

Goat polyclonal to rabbit IgG at 1/50000 dilution

Predicted band size: 36 kDa

Observed band size: 36 kDa