



SZABO SCANDIC

Part of Europa Biosite

Produktinformation



Forschungsprodukte & Biochemikalien



Zellkultur & Verbrauchsmaterial



Diagnostik & molekulare Diagnostik



Laborgeräte & Service

Weitere Information auf den folgenden Seiten!
See the following pages for more information!



Lieferung & Zahlungsart

siehe unsere [Liefer- und Versandbedingungen](#)

Zuschläge

- Mindermengenzuschlag
- Trockeneiszuschlag
- Gefahrgutzuschlag
- Expressversand

SZABO-SCANDIC HandelsgmbH

Quellenstraße 110, A-1100 Wien

T. +43(0)1 489 3961-0

F. +43(0)1 489 3961-7

mail@szabo-scandic.com

www.szabo-scandic.com

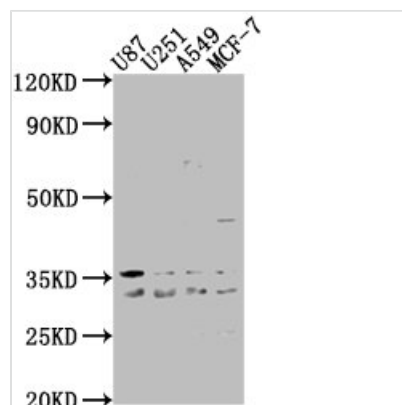
[linkedin.com/company/szaboscandic](https://www.linkedin.com/company/szaboscandic) 



ATP6V1D Antibody

Product Code	CSB-PA897507LA01HU
Storage	Upon receipt, store at -20°C or -80°C. Avoid repeated freeze.
Uniprot No.	Q9Y5K8
Immunogen	Recombinant Human V-type proton ATPase subunit D protein (1-247AA)
Raised In	Rabbit
Species Reactivity	Human
Tested Applications	ELISA, WB; Recommended dilution: WB:1:1000-1:5000
Relevance	Subunit of the peripheral V1 complex of vacuolar ATPase. Vacuolar ATPase is responsible for acidifying a variety of intracellular compartments in eukaryotic cells, thus providing most of the energy required for transport processes in the vacuolar system (By similarity). May play a role in cilium biogenesis through regulation of the transport and the localization of proteins to the cilium.
Form	Liquid
Conjugate	Non-conjugated
Storage Buffer	Preservative: 0.03% Proclin 300 Constituents: 50% Glycerol, 0.01M PBS, pH 7.4
Purification Method	>95%, Protein G purified
Isotype	IgG
Clonality	Polyclonal
Alias	V-type proton ATPase subunit D (V-ATPase subunit D) (V-ATPase 28 kDa accessory protein) (Vacuolar proton pump subunit D), ATP6V1D, ATP6M VATD
Immunogen Species	Homo sapiens (Human)
Research Area	Signal Transduction
Target Names	ATP6V1D

Image



Western Blot

Positive WB detected in: U87 whole cell lysate, U251 whole cell lysate, A549 whole cell lysate, MCF-7 whole cell lysate

All lanes: ATP6V1D antibody at 1:2000

Secondary

Goat polyclonal to rabbit IgG at 1/50000 dilution

Predicted band size: 29 kDa

Observed band size: 29 kDa