



# SZABO SCANDIC

Part of Europa Biosite

## Produktinformation



Forschungsprodukte & Biochemikalien



Zellkultur & Verbrauchsmaterial



Diagnostik & molekulare Diagnostik



Laborgeräte & Service

Weitere Information auf den folgenden Seiten!  
See the following pages for more information!



### Lieferung & Zahlungsart

siehe unsere [Liefer- und Versandbedingungen](#)

### Zuschläge

- Mindermengenzuschlag
- Trockeneiszuschlag
- Gefahrgutzuschlag
- Expressversand

### SZABO-SCANDIC HandelsgmbH

Quellenstraße 110, A-1100 Wien

T. +43(0)1 489 3961-0

F. +43(0)1 489 3961-7

[mail@szabo-scandic.com](mailto:mail@szabo-scandic.com)

[www.szabo-scandic.com](http://www.szabo-scandic.com)

[linkedin.com/company/szaboscandic](https://www.linkedin.com/company/szaboscandic) 

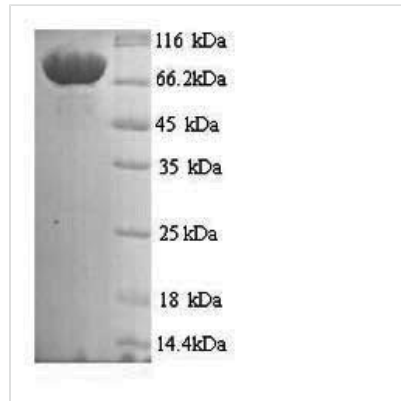


# Recombinant Human Mannan-binding lectin serine protease 1(MASP1)

<b>Product Code</b>	CSB-YP013508HU
<b>Relevance</b>	Functions in the lectin pathway of complement, which performs a key role in innate immunity by recognizing pathogens through patterns of sugar moieties and neutralizing them. The lectin pathway is triggered upon binding of mannan-binding lectin (MBL) and ficolins to sugar moieties which leads to activation of the associated proteases MASP1 and MASP2. Functions as an endopeptidase and may activate MASP2 or C2 or directly activate C3 the key component of complement reaction. Isoform 2 may have an inhibitory effect on the activation of the lectin pathway of complement or may cleave IGFBP5.
<b>Storage</b>	The shelf life is related to many factors, storage state, buffer ingredients, storage temperature and the stability of the protein itself. Generally, the shelf life of liquid form is 6 months at -20°C/-80°C. The shelf life of lyophilized form is 12 months at -20°C/-80°C.
<b>Uniprot No.</b>	P48740
<b>Alias</b>	Complement factor MASP-3 Complement-activating component of Ra-reactive factor Mannose-binding lectin-associated serine protease 1 Short name: MASP-1 Mannose-binding protein-associated serine protease Ra-reactive factor serine protease p100 Short name: RaRF Serine protease 5 Cleaved into the following 2 chains: Mannan-binding lectin serine protease 1 heavy chain Mannan-binding lectin serine protease 1 light chain
<b>Product Type</b>	Recombinant Protein
<b>Immunogen Species</b>	Homo sapiens (Human)
<b>Purity</b>	Greater than 90% as determined by SDS-PAGE.
<b>Sequence</b>	HTVELNNMFGQIQSPGYPSDSEVTWNITVPDGFRIKLYFMHFNLESSYL CEYDYVKVETEDQVLATFCGRETTDTEQTPGQEVVLSPGSFMISITFRSDFSNE ERFTGFDAHYMAVDVDECKEREDEELSCDHYCHNYIGGYCSCRFGYILHTD NRTCVRVCSNLFRTQRTGVITSPDFPNYPKSSECLYTIELEEGFMVNLQFEDI FDIEDHPEVPCPYDYIKIKVGPVKVLPFCGEKAPEPISTQSHSVLILFHSDNSGE NRGWRLSYRAAGNECPQLQPPVHGKIEPSQAKYFFKDQVLVSCDTGYKVLKD NVEMDTFQIECLKDGTWSNKIPTCKIVDCRAPGELEHGLITFSTRNNLTTYKSEI KYSCQEPYYKMLNNNTGIYTCSAQQVWMNKVLGRSLPTCLPVCGLPKFSRKL MARIFNGRPAQKGTTPWIAMLSHLNGQPFCGGSLLGSSWIVTAAHCLHQSLD PEDPTLRDSDLLSPSDFKIILGKHWRLRSDENEQHLGVKHTTLHPQYDPNTFE NDVALVELLESPVLNAFVMPICLPEGPQQEGAMVIVSGWGKQFLQRFPETLME IEIPIVDHSTCQKAYAPLKKKVTRDMICAGEKEGGKDACAGDSGGPMVTLNRE RGQWYLVGTVSWGDDCGKKDRYGVYSYIHHNKDWIQRVTGVRN
<b>Lead Time</b>	Delivery time may differ from different purchasing way or location, please kindly consult your local distributors for specific delivery time.
<b>Research Area</b>	Immunology



<b>Source</b>	Yeast
<b>Gene Names</b>	MASP1
<b>Protein Names</b>	Recommended name: Mannan-binding lectin serine protease 1 EC= 3.4.21.- Alternative name(s): Complement factor MASP-3 Complement-activating component of Ra-reactive factor Mannose-binding lectin-associated serine protease 1 Short
<b>Expression Region</b>	20-699aa
<b>Notes</b>	Repeated freezing and thawing is not recommended. Store working aliquots at 4°C for up to one week.
<b>Tag Info</b>	N-terminal 6xHis-tagged
<b>Mol. Weight</b>	79.0kDa
<b>Protein Description</b>	Full Length of Mature Protein

**Image**


(Tris-Glycine gel) Discontinuous SDS-PAGE (reduced) with 5% enrichment gel and 15% separation gel.

**Reconstitution**

We recommend that this vial be briefly centrifuged prior to opening to bring the contents to the bottom. Please reconstitute protein in deionized sterile water to a concentration of 0.1-1.0 mg/mL. We recommend to add 5-50% of glycerol (final concentration) and aliquot for long-term storage at -20°C/-80°C. Our default final concentration of glycerol is 50%. Customers could use it as reference.