



SZABO SCANDIC

Part of Europa Biosite

Produktinformation



Forschungsprodukte & Biochemikalien



Zellkultur & Verbrauchsmaterial



Diagnostik & molekulare Diagnostik



Laborgeräte & Service

Weitere Information auf den folgenden Seiten!
See the following pages for more information!



Lieferung & Zahlungsart

siehe unsere [Liefer- und Versandbedingungen](#)

Zuschläge

- Mindermengenzuschlag
- Trockeneiszuschlag
- Gefahrgutzuschlag
- Expressversand

SZABO-SCANDIC HandelsgmbH

Quellenstraße 110, A-1100 Wien

T. +43(0)1 489 3961-0

F. +43(0)1 489 3961-7

mail@szabo-scandic.com

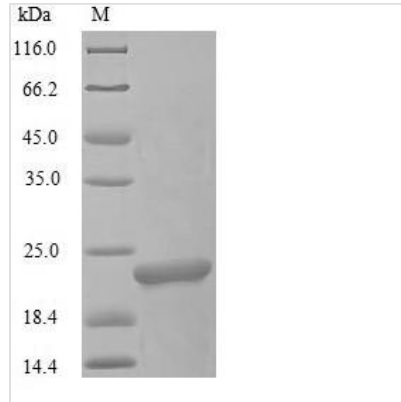
www.szabo-scandic.com

[linkedin.com/company/szaboscandic](https://www.linkedin.com/company/szaboscandic) 



Recombinant Oncorhynchus keta L-rhamnose-binding lectin CSL3

Product Code	CSB-YP309229OBG
Relevance	L-rhamnose binding lectin. Has hemagglutinating activity towards rabbit erythrocytes, human type A erythrocytes, human type B erythrocytes, human type O erythrocytes and sheep erythrocytes. Hemagglutinating activity is inhibited by smooth-type lipopolysaccharide (LPS) from <i>S.flexneri</i> 1A, <i>A.salmonicida</i> and <i>E.coli</i> K12, but not by rough-type LPS from <i>S.flexneri</i> , <i>E.coli</i> K12 and <i>E.coli</i> EH100. Agglutinates <i>E.coli</i> K12 and <i>B.subtilis</i> .
Storage	The shelf life is related to many factors, storage state, buffer ingredients, storage temperature and the stability of the protein itself. Generally, the shelf life of liquid form is 6 months at -20°C/-80°C. The shelf life of lyophilized form is 12 months at -20°C/-80°C.
Uniprot No.	P86179
Product Type	Recombinant Protein
Immunogen Species	Oncorhynchus keta (Chum salmon) (<i>Salmo keta</i>)
Purity	Greater than 85% as determined by SDS-PAGE.
Sequence	AISITCEGSDALLQCDGAKIHIKRANYGRRQHDVCSIGRPDNQLTDTNCLSQSS TSKMAERCGGKSECIVPASNFVFGDPCVGTYKYLDTKYSCVQQQETISSIICEG SDSQLLCDRGEIRIQRANYGRRQHDVCSIGRPHQQLKNTNCLSQSTTSKMAE RCDGKRQCIVSVNSVFGDPCVGTYKYLDVAYTCD
Lead Time	Delivery time may differ from different purchasing way or location, please kindly consult your local distributors for specific delivery time.
Research Area	others
Source	Yeast
Protein Names	Recommended name: L-rhamnose-binding lectin CSL3
Expression Region	1-195aa
Notes	Repeated freezing and thawing is not recommended. Store working aliquots at 4°C for up to one week.
Tag Info	N-terminal 10xHis-tagged
Mol. Weight	24.0 kDa
Protein Description	Full Length
Image	



(Tris-Glycine gel) Discontinuous SDS-PAGE (reduced) with 5% enrichment gel and 15% separation gel.

Reconstitution

We recommend that this vial be briefly centrifuged prior to opening to bring the contents to the bottom. Please reconstitute protein in deionized sterile water to a concentration of 0.1-1.0 mg/mL. We recommend to add 5-50% of glycerol (final concentration) and aliquot for long-term storage at -20°C/-80°C. Our default final concentration of glycerol is 50%. Customers could use it as reference.