



SZABO SCANDIC

Part of Europa Biosite

Produktinformation



Forschungsprodukte & Biochemikalien



Zellkultur & Verbrauchsmaterial



Diagnostik & molekulare Diagnostik



Laborgeräte & Service

Weitere Information auf den folgenden Seiten!
See the following pages for more information!



Lieferung & Zahlungsart

siehe unsere [Liefer- und Versandbedingungen](#)

Zuschläge

- Mindermengenzuschlag
- Trockeneiszuschlag
- Gefahrgutzuschlag
- Expressversand

SZABO-SCANDIC HandelsgmbH

Quellenstraße 110, A-1100 Wien

T. +43(0)1 489 3961-0

F. +43(0)1 489 3961-7

mail@szabo-scandic.com

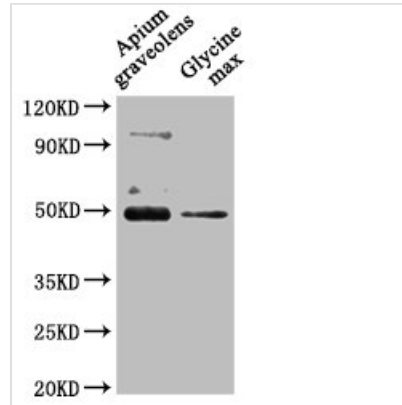
www.szabo-scandic.com

[linkedin.com/company/szaboscandic](https://www.linkedin.com/company/szaboscandic) 



CRD1 Antibody

Product Code	CSB-PA862988LA01DOA
Abbreviation	Magnesium-protoporphyrin IX monomethyl ester [oxidative] cyclase, chloroplastic
Storage	Upon receipt, store at -20°C or -80°C. Avoid repeated freeze.
Uniprot No.	Q9M591
Immunogen	Recombinant Arabidopsis thaliana Magnesium-protoporphyrin IX monomethyl ester [oxidative] cyclase, chloroplastic protein (37-409AA)
Raised In	Rabbit
Species Reactivity	Arabidopsis thaliana
Tested Applications	ELISA, WB; Recommended dilution: WB:1:500-1:2000
Relevance	Catalyzes the formation of the isocyclic ring in chlorophyll biosynthesis. Mediates the cyclase reaction, which results in the formation of divinylprotochlorophyllide (Pchlde) characteristic of all chlorophylls from magnesium-protoporphyrin IX 13-monomethyl ester (MgPMME).
Form	Liquid
Conjugate	Non-conjugated
Storage Buffer	Preservative: 0.03% Proclin 300 Constituents: 50% Glycerol, 0.01M PBS, pH 7.4
Purification Method	>95%, Protein G purified
Isotype	IgG
Clonality	Polyclonal
Alias	Magnesium-protoporphyrin IX monomethyl ester [oxidative] cyclase, chloroplastic (Mg-protoporphyrin IX monomethyl ester oxidative cyclase) (EC 1.14.13.81) (Copper response defect 1 protein) (Dicarboxylate diiron protein) (AtZIP) (MPE-cyclase), CRD1, ACSF AT103 CHL27 ZIP
Species	Arabidopsis thaliana
Research Area	Others
Target Names	CRD1
Image	



Western Blot

Positive WB detected in: Apium graveolens leaf tissue, Glycine max leaf tissue

All lanes: CRD1 antibody at 1:1000

Secondary

Goat polyclonal to rabbit IgG at 1/50000 dilution

Predicted band size: 48 kDa

Observed band size: 48 kDa