



SZABO SCANDIC

Part of Europa Biosite

Produktinformation



Forschungsprodukte & Biochemikalien



Zellkultur & Verbrauchsmaterial



Diagnostik & molekulare Diagnostik



Laborgeräte & Service

Weitere Information auf den folgenden Seiten!
See the following pages for more information!



Lieferung & Zahlungsart

siehe unsere [Liefer- und Versandbedingungen](#)

Zuschläge

- Mindermengenzuschlag
- Trockeneiszuschlag
- Gefahrgutzuschlag
- Expressversand

SZABO-SCANDIC HandelsgmbH

Quellenstraße 110, A-1100 Wien

T. +43(0)1 489 3961-0

F. +43(0)1 489 3961-7

mail@szabo-scandic.com

www.szabo-scandic.com

[linkedin.com/company/szaboscandic](https://www.linkedin.com/company/szaboscandic) 

PRODUCT INFORMATION

Target	CLEC12A
Synonyms	CLEC12A;MICL;CLL-1;CLL1;DCAL2;DCAL-2;CD371
Description	Recombinant human CLEC12A Protein with C-terminal 6×His tag
Delivery	In Stock
Uniprot ID	Q5QGZ9
Expression Host	HEK293
Tag	C-6×His Tag
Molecular Characterization	CLEC12A(His65-Ala265) 6×His tag
Molecular Weight	The protein has a predicted molecular mass of 24.6 kDa after removal of the signal peptide. The apparent molecular mass of CLEC12A-His is approximately 35-55 kDa due to glycosylation.
Purity	The purity of the protein is greater than 95% as determined by SDS-PAGE and Coomassie blue staining.
Formulation & Reconstitution	Lyophilized from sterile PBS, pH 7.4. Normally 5 % - 8% trehalose is added as protectants before lyophilization. Please see Certificate of Analysis for specific instructions of reconstitution.
Storage & Shipping	Store at -20°C to -80°C for 12 months in lyophilized form. After reconstitution, if not intended for use within a month, aliquot and store at -80°C (Avoid repeated freezing and thawing). Lyophilized proteins are shipped at ambient temperature.
Background	This gene encodes a member of the C-type lectin/C-type lectin-like domain (CTL/CTLD) superfamily. Members of this family share a common protein fold and have diverse functions, such as cell adhesion, cell-cell signaling, glycoprotein turnover, and roles in inflammation and immune response. The protein encoded by this gene is a negative regulator of granulocyte and monocyte function. Several alternatively spliced transcript variants of this gene have been described, but the full-length nature of some of these variants has not been determined. This gene is closely linked to other CTL/CTLD superfamily members in the natural killer gene complex region on chromosome 12p13.
Usage	Research use only
Conjugate	Unconjugated



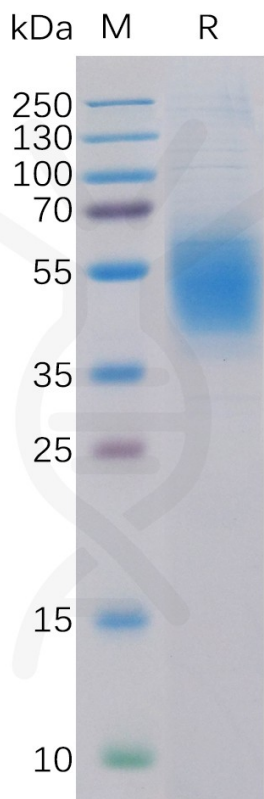


Figure 1. Human CLEC12A Protein, His Tag on SDS-PAGE under reducing condition.

Human CLEC12A, His Tagged protein ELISA
0.2 µg of Human CLEC12A, His tagged protein per well

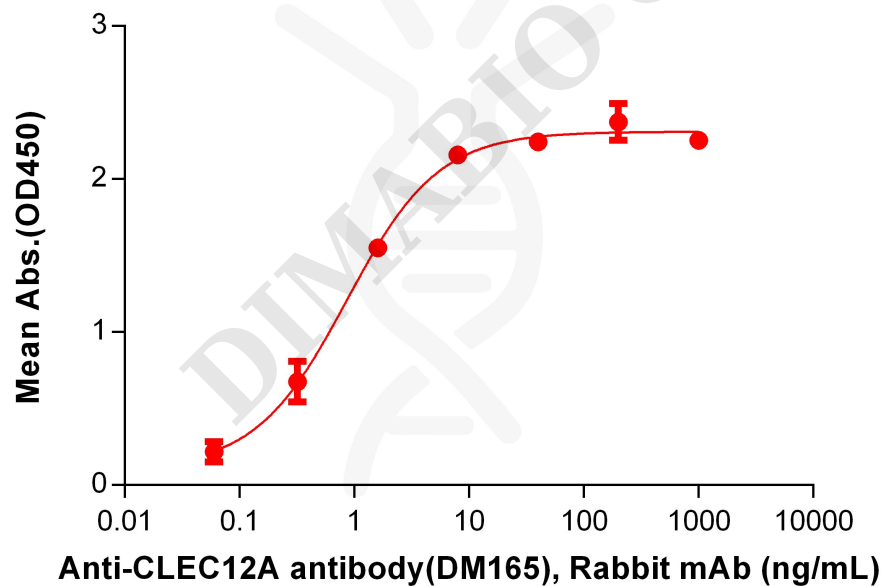


Figure 2. ELISA plate pre-coated by 2 µg/mL (100 µL/well) Human CLEC12A Protein, His Tag (PME100096) can bind Anti-CLEC12A antibody(DM165), Rabbit mAb in a linear range of 0.32-1.60 ng/mL.

