



SZABO SCANDIC

Part of Europa Biosite

Produktinformation



Forschungsprodukte & Biochemikalien



Zellkultur & Verbrauchsmaterial



Diagnostik & molekulare Diagnostik



Laborgeräte & Service

Weitere Information auf den folgenden Seiten!
See the following pages for more information!



Lieferung & Zahlungsart

siehe unsere [Liefer- und Versandbedingungen](#)

Zuschläge

- Mindermengenzuschlag
- Trockeneiszuschlag
- Gefahrgutzuschlag
- Expressversand

SZABO-SCANDIC HandelsgmbH

Quellenstraße 110, A-1100 Wien

T. +43(0)1 489 3961-0

F. +43(0)1 489 3961-7

mail@szabo-scandic.com

www.szabo-scandic.com

[linkedin.com/company/szaboscandic](https://www.linkedin.com/company/szaboscandic) 

HCV E2 PROTEIN, Subtype 1a

CATALOG NUMBER: HCV-E2-015P, 50 µg

Introduction

The hepatitis C virus (HCV) is a small, enveloped, single-stranded, positive-sense RNA virus. HCV has a high rate of replication with approximately one trillion particles produced each day in an infected individual. Due to lack of proofreading by the HCV RNA polymerase, the HCV has an exceptionally high mutation rate, a factor that may help it elude the host's immune response. There are seven major genotypes of HCV with several subtypes within each genotype.

The viral RNA codes for a large polyprotein of approx. 3100 amino acids, which is posttranslationally processed by cellular and viral proteases. The N-terminus encompasses the structural proteins core and two glycoproteins (E1, E2); the C-terminus encompasses the p7 protein and the nonstructural (NS) proteins NS2, NS3, NS4A, NS4B, NS5A and NS5B.

Applications

Western blot standard, antibody ELISA, antigen, etc.

Description

Viral protein purified from 293 cell culture (heavily N-glycosylated)

Viral Protein

C-terminal 6xHis tagged HCV E2 protein (aa 383-663)(GenBank Accession No. AF009606)

Storage

Store at -20 °C; Stable for 3-months from the date of shipment when kept at 4 °C. Non-hazardous. No MSDS required.

Endotoxin Level

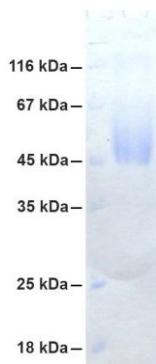
<0.01 EU per 1 µg of the protein by LAL test

Concentration

1 µg/µl in PBS with 20% glycerol and 0.1% sodium azide

Specificity

≥ 95% purity



SDS-PAGE (12%): purified E2 (HCV) protein (aa 383-663), subtype 1a

HCV E2 (subtype 1a) SEQ:

AETHVTGGSAGRTTAGLVGLLTPGAKQNIQLINTNGSWHINSTALNCNESLNTGWLAGLFYQHKFNSSGCPERLASCRLTDF
 AQQWGPISYANGSGLDERPYCWHYPPRPGIIVPAKSVCGPVYCFPTSPVTVVGTDDRSGAPTYSWGANDTDVFLNNTRPPLGN
 WFGCTWMNSTGFVKVCGAPPCVIGGVGNNTLLCPTDCFRKHPEATYSRCGSGPWITPRCMVDYPYRLWHYPCTINYTIFKVRM
 YVGGVEHRLEAACNWTTRGERCDLEDRDRSELS