



SZABO SCANDIC

Part of Europa Biosite

Produktinformation



Forschungsprodukte & Biochemikalien



Zellkultur & Verbrauchsmaterial



Diagnostik & molekulare Diagnostik



Laborgeräte & Service

Weitere Information auf den folgenden Seiten!
See the following pages for more information!



Lieferung & Zahlungsart

siehe unsere [Liefer- und Versandbedingungen](#)

Zuschläge

- Mindermengenzuschlag
- Trockeneiszuschlag
- Gefahrgutzuschlag
- Expressversand

SZABO-SCANDIC HandelsgmbH

Quellenstraße 110, A-1100 Wien

T. +43(0)1 489 3961-0

F. +43(0)1 489 3961-7

mail@szabo-scandic.com

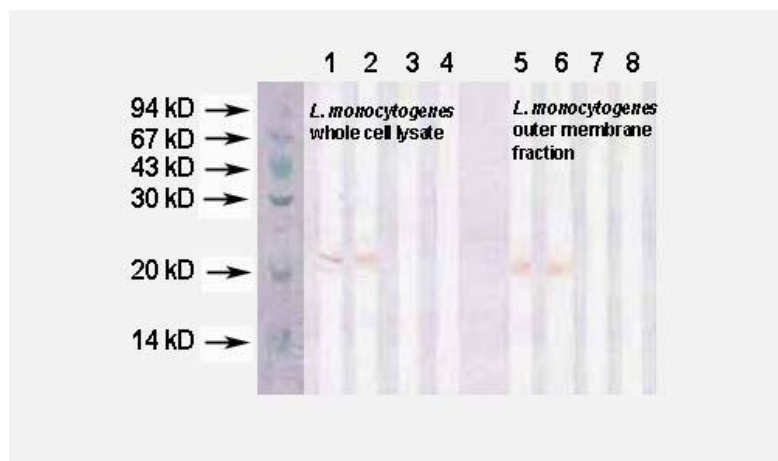
www.szabo-scandic.com

[linkedin.com/company/szaboscandic](https://www.linkedin.com/company/szaboscandic) 

Anti-*Listeria monocytogenes* mouse monoclonal antibody

Applications	ELISA, WB, sandwich immunoassay.
Description	Mouse anti- <i>Listeria monocytogenes</i> monoclonal antibody.
Immunogen	Hybridoma clones have been derived from hybridization of Sp2/0 myeloma cells with spleen cells of Balb/c mice immunized with purified <i>Listeria monocytogenes</i> .
Specificity	All three antibodies recognize intact <i>Listeria monocytogenes</i> cells, <i>Listeria monocytogenes</i> whole cell lysate, and outer membrane of <i>Listeria monocytogenes</i> . Cross react with <i>L. innocua</i> and <i>L. ivanovii</i> . No cross reactivity detected with the following species: <i>E. Coli</i> , <i>Salmonella</i> , <i>Y. pestis</i> , <i>F. tularensis</i> , <i>L. pneumophila</i> and <i>B. abortus</i> .
Purification	Protein G Sepharose chromatography.
Storage	Store at -20 °C; Stable for at least 1 month from the date of shipment at 4 °C.
Concentration	1 µg/µl in PBS with 0.1% sodium azide.
Size	100 µg
Usage	This product does not contain livestock or poultry disease agents, non-toxic/non contagious and is not intended for human use, only for laboratory research and development.

Product	Cat#	Clone#	Isotype	Size
Anti- <i>Listeria monocytogenes</i>	MLM-310-070	C070	IgG2a	100 µg
Anti- <i>Listeria monocytogenes</i>	MLM-310-010	C010	IgG1	100 µg



WB:

Lane 1 and 5: antibody MLM-310-070
 Lane 2 and 6: antibody MLM-310-010
 Lane 3 and 7: anti-*Legionella pneumophila* antibody
 Lane 4 and 8: control (anti-mouse IgG HRP-conjugated antibody)