



# SZABO SCANDIC

Part of Europa Biosite

## Produktinformation



Forschungsprodukte & Biochemikalien



Zellkultur & Verbrauchsmaterial



Diagnostik & molekulare Diagnostik



Laborgeräte & Service

Weitere Information auf den folgenden Seiten!  
See the following pages for more information!



### Lieferung & Zahlungsart

siehe unsere [Liefer- und Versandbedingungen](#)

### Zuschläge

- Mindermengenzuschlag
- Trockeneiszuschlag
- Gefahrgutzuschlag
- Expressversand

### SZABO-SCANDIC HandelsgmbH

Quellenstraße 110, A-1100 Wien

T. +43(0)1 489 3961-0

F. +43(0)1 489 3961-7

[mail@szabo-scandic.com](mailto:mail@szabo-scandic.com)

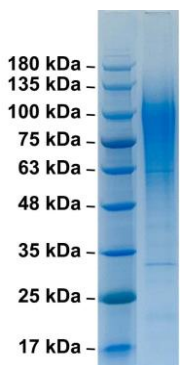
[www.szabo-scandic.com](http://www.szabo-scandic.com)

[linkedin.com/company/szaboscandic](https://www.linkedin.com/company/szaboscandic) 

## Attachment Glycoprotein G of Respiratory Syncytial Virus (RSV)(Type A)

CATALOG NUMBER: RSV-GP-10Ap

<b>Introduction</b>	Respiratory syncytial virus (RSV) has a negative-sense, single-stranded 15kb RNA genome, encoding 11 proteins (NS1-NS2-N-P-M-SH-G-F-M2-L). RSV is divided into two antigenic subtypes, A and B, based on the reactivity of the F and G surface proteins to monoclonal antibodies.  The Surface protein G (glycoprotein) is primarily responsible for viral attachment to host cells, and is highly variable between strains. Surface protein F (fusion protein) is responsible for fusion of viral and host cell membranes, as well as syncytium formation between viral particles, and its sequence is highly conserved between strains.
<b>Applications</b>	Western blot standard, antibody ELISA, antigen, <i>etc.</i>
<b>Description</b>	6x his-tagged recombinant protein expressed and purified from HEK293 cells
<b>Viral Protein</b>	C-terminal 6xhis-tagged RSV (type A) attachment glycoprotein(G) (amino acid 66-298)(GenBank accession#: P20895)
<b>Storage</b>	Store at -20 °C; Stable for 6-months from the date of shipment when kept at 4 °C. Non-hazardous.
<b>Concentration</b>	50 µg (1mg/ml) in PBS
<b>Endotoxin Level</b>	<0.01 EU per 1 µg of the protein by LAL test
<b>Specificity</b>	≥ 95% purity



**SDS-PAGE:** purified RSV attachment glycoprotein G (type A)

### Recombinant RSV (Type A) Attachment Glycoprotein G (aa 66-298) SEQ:

NHKVTLTTAI IQDATSQIKNTTPTYLTQDPQLGISFSNLSEITSQTTTTILASTTPGVKSNLQPTTVKTKNTTTTQTQPSKPTTK  
 QRQNKPPNKPNNDFHFVFNFVPCISCSNPTCWAICKRIPNKKPGKKTTKPTKKPTFKTTKDKHPQTTKPKVPTTKPTEE  
 PTINTTKTNI ITLLTNNTTGNPKLTSQMETFHSTSSSEGNLSPSQVSTTSEHPSQPSSPPNTRQHHHHHH