



# SZABO SCANDIC

Part of Europa Biosite

## Produktinformation



Forschungsprodukte & Biochemikalien



Zellkultur & Verbrauchsmaterial



Diagnostik & molekulare Diagnostik



Laborgeräte & Service

Weitere Information auf den folgenden Seiten!  
See the following pages for more information!



### Lieferung & Zahlungsart

siehe unsere [Liefer- und Versandbedingungen](#)

### Zuschläge

- Mindermengenzuschlag
- Trockeneiszuschlag
- Gefahrgutzuschlag
- Expressversand

### SZABO-SCANDIC HandelsgmbH

Quellenstraße 110, A-1100 Wien

T. +43(0)1 489 3961-0

F. +43(0)1 489 3961-7

[mail@szabo-scandic.com](mailto:mail@szabo-scandic.com)

[www.szabo-scandic.com](http://www.szabo-scandic.com)

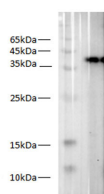
[linkedin.com/company/szaboscandic](https://www.linkedin.com/company/szaboscandic) 

## S-tag Polyclonal Antibody

<b>Catalog No.</b>	E-AB-40522	<b>Reactivity</b>	All
<b>Storage</b>	Store at -20°C. Avoid freeze / thaw cycles.	<b>Host</b>	Rabbit
<b>Applications</b>	WB	<b>Isotype</b>	IgG

**Note:** Centrifuge before opening to ensure complete recovery of vial contents.

### Images



Western blot of S-Tag fusion protein with anti-S tag antibody at dilution of 1:2000.

### Immunogen Information

<b>Immunogen</b>	Synthetic peptide corresponding to S tag conjugated to keyhole limpet haemocyanin.
<b>Synonyms</b>	KETAAAKFERQHMS tag, S peptide epitope tag

### Product Information

<b>Calculated MW</b>	40kDa
<b>Observed MW</b>	40kDa
<b>Buffer</b>	PBS with 0.02% sodium azide, 50% glycerol,pH 7.4
<b>Purify</b>	Antigen Affinity Purification
<b>Dilution</b>	WB: 1:2000-4000

### Background

S tag is an epitope tag composed of a 15 residue peptide, KETAAAKFERQHMS, derived from the pancreatic ribonuclease A. This interactive complex (S-tag/S-protein) results in micromolar affinity – dependent upon pH, temperature, and ionic strength . T

#### For Research Use Only

Thank you for your recent purchase.

If you would like to learn more about antibodies, please visit [www.elabscience.com](http://www.elabscience.com).

**Focus on your research  
 Service for life science**

Applications:WB-Western Blot IHC-Immunohistochemistry IF-Immunofluorescence IP-Immunoprecipitation FC-Flow cytometry ChIP-Chromatin Immunoprecipitation Reactivity: H-Human R-Rat M-Mouse Mk-Monkey Dg-Dog Ch-Chicken Hm-Hamster Rb-Rabbit Sh-Sheep Pg-Pig Z-Zebrafish X-Xenopus C-Cow.