



SZABO SCANDIC

Part of Europa Biosite

Produktinformation



Forschungsprodukte & Biochemikalien



Zellkultur & Verbrauchsmaterial



Diagnostik & molekulare Diagnostik



Laborgeräte & Service

Weitere Information auf den folgenden Seiten!
See the following pages for more information!



Lieferung & Zahlungsart

siehe unsere [Liefer- und Versandbedingungen](#)

Zuschläge

- Mindermengenzuschlag
- Trockeneiszuschlag
- Gefahrgutzuschlag
- Expressversand

SZABO-SCANDIC HandelsgmbH

Quellenstraße 110, A-1100 Wien

T. +43(0)1 489 3961-0

F. +43(0)1 489 3961-7

mail@szabo-scandic.com

www.szabo-scandic.com

[linkedin.com/company/szaboscandic](https://www.linkedin.com/company/szaboscandic) 

MAA Lysine Polyclonal Antibody

Catalog Number: E-AB-40543



Note: Centrifuge before opening to ensure complete recovery of vial contents.

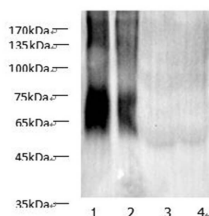
Description

Reactivity	All
Immunogen	MAA protein
Host	Rabbit
Isotype	IgG
Purification	Antigen Affinity Purification
Conjugation	Unconjugated
Formulation	PBS with 0.02% sodium azide, 50% glycerol, pH 7.4

Applications Recommended Dilution

WB	1:1000-2000
-----------	-------------

Data



Western blot of anti-MAA Lysine Polyclonal Antibody at dilution of 1:1000. Lane 1: MAA-HSA (10ug/lane)
Lane 2: MAA- HSA (5ug/lane), Lane 3: HSA (10ug/lane), Lane 4: HSA (5ug/lane).

Preparation & Storage

Storage Store at -20°C. Avoid freeze / thaw cycles.

Background

Malondialdehyde (MDA) and acetaldehyde (AA) react synergistically to form hybrid malondialdehyde-acetaldehyde (MAA) adducts. MAA adducts are unique among aldehyde-protein adducts in their stability, potent immunogenicity, ability to alter protein regulat

For Research Use Only

A Reliable Research Partner in Life Science and Medicine

Toll-free: 1-888-852-8623

Web: www.elabscience.com

Tel: 1-832-243-6086

Email: techsupport@elabscience.com

Fax: 1-832-243-6017