



SZABO SCANDIC

Part of Europa Biosite

Produktinformation



Forschungsprodukte & Biochemikalien



Zellkultur & Verbrauchsmaterial



Diagnostik & molekulare Diagnostik



Laborgeräte & Service

Weitere Information auf den folgenden Seiten!
See the following pages for more information!



Lieferung & Zahlungsart

siehe unsere [Liefer- und Versandbedingungen](#)

Zuschläge

- Mindermengenzuschlag
- Trockeneiszuschlag
- Gefahrgutzuschlag
- Expressversand

SZABO-SCANDIC HandelsgmbH

Quellenstraße 110, A-1100 Wien

T. +43(0)1 489 3961-0

F. +43(0)1 489 3961-7

mail@szabo-scandic.com

www.szabo-scandic.com

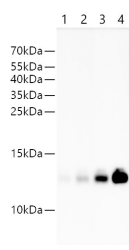
[linkedin.com/company/szaboscandic](https://www.linkedin.com/company/szaboscandic) 

Streptavidin Polyclonal Antibody

Catalog No.	E-AB-40552	Reactivity	All
Storage	Store at -20°C. Avoid freeze / thaw cycles.	Host	Rabbit
Applications	WB	Isotype	IgG

Note: Centrifuge before opening to ensure complete recovery of vial contents.

Images



Western blotting of Streptavidin with anti-Streptavidin rabbit polyclonal antibody at dilution of 1:1000. Lane 1 : Recombinant Streptavidin protein at 6.25ng; Lane 2 : Recombinant Streptavidin protein at 12.5ng; Lane 3: Recombinant Streptavidin protein at 25ng; Lane 4: Recombinant Streptavidin protein at 50ng

Immunogen Information

Immunogen	Native Streptomyces Avidinii streptavidin protein
Swissprot	P22629
Synonyms	Avidin, Streptavidin, SA

Product Information

Calculated MW	40kDa
Observed MW	40kDa
Buffer	PBS with 0.02% sodium azide, 50% glycerol,pH 7.4
Purify	Antigen Affinity Purification
Dilution	WB: 1:500-2000

Background

Streptavidin is a biotin-binding protein found in the culture broth of the bacterium Streptomyces. Streptavidin can bind to four moles of biotin per mole of protein with extremely high affinity, approximately 10,000-15,000 Da. Streptavidin lacks the carbohydrate side chains present on avidin and has an isoelectric point of 6.5 to avidin's 10 far closer to that at which most useful biological interactions occur. As a result, Streptavidin frequently exhibits much lower non-specific binding than avidin does.

For Research Use Only

Thank you for your recent purchase.

If you would like to learn more about antibodies, please visit www.elabscience.com.

**Focus on your research
 Service for life science**

Applications:WB-Western Blot IHC-Immunohistochemistry IF-Immunofluorescence IP-Immunoprecipitation FC-Flow cytometry ChIP-Chromatin Immunoprecipitation Reactivity: H-Human R-Rat M-Mouse Mk-Monkey Dg-Dog Ch-Chicken Hm-Hamster Rb-Rabbit Sh-Sheep Pg-Pig Z-Zebrafish X-Xenopus C-Cow.