



SZABO SCANDIC

Part of Europa Biosite

Produktinformation



Forschungsprodukte & Biochemikalien



Zellkultur & Verbrauchsmaterial



Diagnostik & molekulare Diagnostik



Laborgeräte & Service

Weitere Information auf den folgenden Seiten!
See the following pages for more information!



Lieferung & Zahlungsart

siehe unsere [Liefer- und Versandbedingungen](#)

Zuschläge

- Mindermengenzuschlag
- Trockeneiszuschlag
- Gefahrgutzuschlag
- Expressversand

SZABO-SCANDIC HandelsgmbH

Quellenstraße 110, A-1100 Wien

T. +43(0)1 489 3961-0

F. +43(0)1 489 3961-7

mail@szabo-scandic.com

www.szabo-scandic.com

[linkedin.com/company/szaboscandic](https://www.linkedin.com/company/szaboscandic) 

CXCL12/SDF1 Polyclonal Antibody

Catalog Number: E-AB-40578



Note: Centrifuge before opening to ensure complete recovery of vial contents.

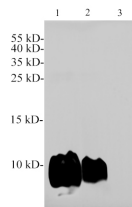
Description

Reactivity	Human, Mouse, Rat
Immunogen	Recombinant Rat CXCL12 protein expressed by E.coli.
Host	Rabbit
Isotype	IgG
Purification	Antigen Affinity Purification
Conjugation	Unconjugated
Formulation	PBS with 0.02% sodium azide, 50% glycerol, pH 7.4

Applications Recommended Dilution

WB	1:2000-4000
-----------	-------------

Data



Western blotting with anti-CXCL12 polyclonal antibody at dilution of 1:2000. Lane 1: THP-1 cell lysate, lane 2: Raw264.7 cell lysate, lane 3: K562 cell lysate for negative control.

Observed Mw: 10kDa
Calculated Mw: 10kDa



Western blot of Rat testis with CXCL4 polyclonal antibody at 1:1000 dilution.

Preparation & Storage

Storage Store at -20°C. Avoid freeze / thaw cycles.

Background

The stromal cell derived factor 1 (SDF1/CXCL12) is a small, pro-inflammatory chemoattractant cytokine that regulates leukocyte trafficking through interactions with its cognate 7-transmembrane G protein-coupled receptors. The SDF1/CXCL12 receptor, CXCR4, also serves as a coreceptor for the entry of human immunodeficiency virus into target cells. SDF1/CXCL12 may regulate homing and maintenance of CXCR4-expressing stem or progenitor cells, including embryonic and many somatic stem cells. Many cancer cells express CXCR4, suggesting that SDF1/CXCL12 plays a role in cancer metastasis. Alternative splicing and differential processing during maturation produce a pair of SDF1/CXCL12 isoforms (SDF1/CXCL12 α and SDF1/CXCL12 β) that have different properties and biological activities. Additional isoforms of SDF1/CXCL12 have been reported.

For Research Use Only

A Reliable Research Partner in Life Science and Medicine

Toll-free: 1-888-852-8623

Web: www.elabscience.com

Tel: 1-832-243-6086

Email: techsupport@elabscience.com

Fax: 1-832-243-6017