



SZABO SCANDIC

Part of Europa Biosite

Produktinformation



Forschungsprodukte & Biochemikalien



Zellkultur & Verbrauchsmaterial



Diagnostik & molekulare Diagnostik



Laborgeräte & Service

Weitere Information auf den folgenden Seiten!
See the following pages for more information!



Lieferung & Zahlungsart

siehe unsere [Liefer- und Versandbedingungen](#)

Zuschläge

- Mindermengenzuschlag
- Trockeneiszuschlag
- Gefahrgutzuschlag
- Expressversand

SZABO-SCANDIC HandelsgmbH

Quellenstraße 110, A-1100 Wien

T. +43(0)1 489 3961-0

F. +43(0)1 489 3961-7

mail@szabo-scandic.com

www.szabo-scandic.com

[linkedin.com/company/szaboscandic](https://www.linkedin.com/company/szaboscandic) 

PBEF/NAMPT Polyclonal Antibody

Catalog Number: E-AB-40580



Note: Centrifuge before opening to ensure complete recovery of vial contents.

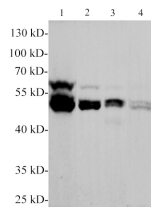
Description

Reactivity	Human,Rat
Immunogen	Recombinant Human PBEF protein expressed by E.coli.
Host	Rabbit
Isotype	IgG
Purification	Antigen Affinity Purification
Conjugation	Unconjugated
Formulation	PBS with 0.02% sodium azide, 50% glycerol,pH 7.4

Applications Recommended Dilution

WB	1:500-1000
-----------	------------

Data



Western blotting with anti-PBEF polyclonal Antibody at dilution of 1:1000. Lane 1: Raji cell lysates, lane 2: PC-3 cell lysate, lane 3: MCF-7 cell lysate, lane 4: C6 cell lysate.

Observed Mw:52kDa
Calculated Mw:55kDa

Preparation & Storage

Storage Store at -20°C. Avoid freeze / thaw cycles.

Background

PBEF (pre-B cell colony-enhancing factor), also known as visfatin and nicotinamide phosphoribosyltransferase, is an approximately 52 kDa member of the NAPRTase family of molecules. It functions both intracellularly and extracellularly, where it participates in NAD synthesis and insulin receptor activation, respectively.

For Research Use Only

A Reliable Research Partner in Life Science and Medicine

Toll-free: 1-888-852-8623

Web: www.elabscience.com

Tel: 1-832-243-6086

Email: techsupport@elabscience.com

Fax: 1-832-243-6017