



# SZABO SCANDIC

Part of Europa Biosite

## Produktinformation



Forschungsprodukte & Biochemikalien



Zellkultur & Verbrauchsmaterial



Diagnostik & molekulare Diagnostik



Laborgeräte & Service

Weitere Information auf den folgenden Seiten!  
See the following pages for more information!



### Lieferung & Zahlungsart

siehe unsere [Liefer- und Versandbedingungen](#)

### Zuschläge

- Mindermengenzuschlag
- Trockeneiszuschlag
- Gefahrgutzuschlag
- Expressversand

### SZABO-SCANDIC HandelsgmbH

Quellenstraße 110, A-1100 Wien

T. +43(0)1 489 3961-0

F. +43(0)1 489 3961-7

[mail@szabo-scandic.com](mailto:mail@szabo-scandic.com)

[www.szabo-scandic.com](http://www.szabo-scandic.com)

[linkedin.com/company/szaboscandic](https://www.linkedin.com/company/szaboscandic) 

# Serpin A1 Polyclonal Antibody

Catalog Number:E-AB-40634



**Note:** Centrifuge before opening to ensure complete recovery of vial contents.

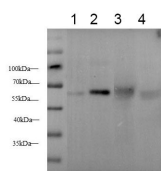
## Description

<b>Reactivity</b>	Human,Mouse,Rat
<b>Immunogen</b>	Recombinant Rat Serpin A1 protein expressed by E.coli
<b>Host</b>	Rabbit
<b>Isotype</b>	IgG
<b>Purification</b>	Antigen Affinity Purification
<b>Conjugation</b>	Unconjugated
<b>Formulation</b>	PBS with 0.02% sodium azide,50% glycerol,pH 7.4

## Applications Recommended Dilution

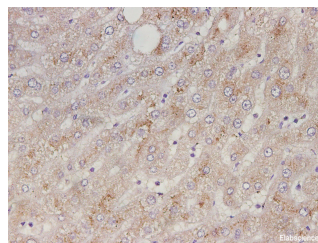
<b>WB</b>	1:100-1:200
<b>IHC</b>	1:2000-1:4000

## Data



Western blot with anti-alpha 1 Antitrypsin Polyclonal antibody at dilution of 1:200.lane 1: Rat kidney tissue, lane 2:Mouse liver tissue, lane 3: Human plasma, lane 4:HepG2 whole cell lysate

**Observed Mw:60kDa**  
**Calculated Mw:46kDa**



Immunohistochemistry of paraffin-embedded Human liver tissue using Serpin A1 Polyclonal Antibody at dilution of 1:3500(×400)

## Preparation & Storage

**Storage** Store at -20°C. Avoid freeze / thaw cycles.

## Background

Serpin A1 is the archetypal member of the Serpin superfamily of the serine protease inhibitors. As one of the most abundant proteinase inhibitors in the circulation, it is synthesized in the liver and secreted into the bloodstream with the major function to protect tissues against neutrophil elastase. A severe Serpin A1 deficiency leads to several clinical complications such as pulmonary emphysema, juvenile hepatitis, cirrhosis, and hepatocellular carcinoma .

## For Research Use Only

A Reliable Research Partner in Life Science and Medicine

Toll-free: 1-888-852-8623

Web: [www.elabscience.com](http://www.elabscience.com)

Tel: 1-832-243-6086

Email: [techsupport@elabscience.com](mailto:techsupport@elabscience.com)

Fax: 1-832-243-6017