



SZABO SCANDIC

Part of Europa Biosite

Produktinformation



Forschungsprodukte & Biochemikalien



Zellkultur & Verbrauchsmaterial



Diagnostik & molekulare Diagnostik



Laborgeräte & Service

Weitere Information auf den folgenden Seiten!
See the following pages for more information!



Lieferung & Zahlungsart

siehe unsere [Liefer- und Versandbedingungen](#)

Zuschläge

- Mindermengenzuschlag
- Trockeneiszuschlag
- Gefahrgutzuschlag
- Expressversand

SZABO-SCANDIC HandelsgmbH

Quellenstraße 110, A-1100 Wien

T. +43(0)1 489 3961-0

F. +43(0)1 489 3961-7

mail@szabo-scandic.com

www.szabo-scandic.com

[linkedin.com/company/szaboscandic](https://www.linkedin.com/company/szaboscandic) 

Pancreatic lipase/PTL Polyclonal Antibody

Catalog Number:E-AB-40636



Note: Centrifuge before opening to ensure complete recovery of vial contents.

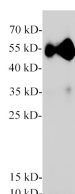
Description

| | |
|---------------------|--|
| Reactivity | Mouse,Rat |
| Immunogen | Recombinant Human Pancreatic lipase protein expressed by E.coli. |
| Host | Rabbit |
| Isotype | IgG |
| Purification | Antigen Affinity Purification |
| Conjugation | Unconjugated |
| Formulation | PBS with 0.02% sodium azide,50% glycerol,pH 7.4 |

Applications Recommended Dilution

WB 1:1000-1:2000

Data



Western blot of Mouse pancreas with anti-Pancreatic lipase polyclonal antibody at 1:2000 dilution.

Observed Mw:51 kDa
Calculated Mw:51 kDa



Western blot of Rat pancreas with Pancreatic lipase polyclonal antibody at 1:2000 dilution.

Preparation & Storage

Storage Store at -20°C. Avoid freeze / thaw cycles.

Background

Plays an important role in fat metabolism. It preferentially splits the esters of long-chain fatty acids at positions 1 and 3,producing mainly 2-monoacylglycerol and free fatty acids,and shows considerably higher activity against insoluble emulsified substrates than against soluble ones.

For Research Use Only

A Reliable Research Partner in Life Science and Medicine

Toll-free: 1-888-852-8623

Web: www.elabscience.com

Tel: 1-832-243-6086

Email: techsupport@elabscience.com

Fax: 1-832-243-6017