



SZABO SCANDIC

Part of Europa Biosite

Produktinformation



Forschungsprodukte & Biochemikalien



Zellkultur & Verbrauchsmaterial



Diagnostik & molekulare Diagnostik



Laborgeräte & Service

Weitere Information auf den folgenden Seiten!
See the following pages for more information!



Lieferung & Zahlungsart

siehe unsere [Liefer- und Versandbedingungen](#)

Zuschläge

- Mindermengenzuschlag
- Trockeneiszuschlag
- Gefahrgutzuschlag
- Expressversand

SZABO-SCANDIC HandelsgmbH

Quellenstraße 110, A-1100 Wien

T. +43(0)1 489 3961-0

F. +43(0)1 489 3961-7

mail@szabo-scandic.com

www.szabo-scandic.com

[linkedin.com/company/szaboscandic](https://www.linkedin.com/company/szaboscandic) 

COL1A1 Polyclonal Antibody

Catalog Number: E-AB-40665



Note: Centrifuge before opening to ensure complete recovery of vial contents.

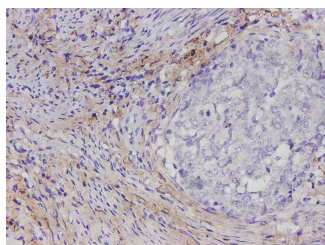
Description

Reactivity	Human
Immunogen	Human COL1A1 peptide
Host	Rabbit
Isotype	IgG
Purification	Antigen Affinity Purification
Conjugation	Unconjugated
Formulation	PBS with 0.02% sodium azide, 50% glycerol, pH 7.4

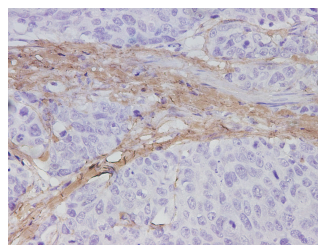
Applications Recommended Dilution

IHC	1:700-1:1700
------------	--------------

Data



Immunohistochemistry of paraffin-embedded Human cervical cancer tissue using COL1A1 Polyclonal Antibody at dilution of 1:1700(×400)



Immunohistochemistry of paraffin-embedded Human stomach cancer tissue using COL1A1 Polyclonal Antibody at dilution of 1:1700(×400)

Preparation & Storage

Storage Store at -20°C. Avoid freeze / thaw cycles.

Background

Type I collagen is a member of group I collagen (fibrillar forming collagen).

For Research Use Only

A Reliable Research Partner in Life Science and Medicine

Toll-free: 1-888-852-8623

Web: www.elabscience.com

Tel: 1-832-243-6086

Email: techsupport@elabscience.com

Fax: 1-832-243-6017