



SZABO SCANDIC

Part of Europa Biosite

Produktinformation



Forschungsprodukte & Biochemikalien



Zellkultur & Verbrauchsmaterial



Diagnostik & molekulare Diagnostik



Laborgeräte & Service

Weitere Information auf den folgenden Seiten!
See the following pages for more information!



Lieferung & Zahlungsart

siehe unsere [Liefer- und Versandbedingungen](#)

Zuschläge

- Mindermengenzuschlag
- Trockeneiszuschlag
- Gefahrgutzuschlag
- Expressversand

SZABO-SCANDIC HandelsgmbH

Quellenstraße 110, A-1100 Wien

T. +43(0)1 489 3961-0

F. +43(0)1 489 3961-7

mail@szabo-scandic.com

www.szabo-scandic.com

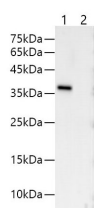
[linkedin.com/company/szaboscandic](https://www.linkedin.com/company/szaboscandic) 

V5-Tag Monoclonal Antibody

Catalog No.	E-AB-48004	Reactivity	All
Storage	Store at -20°C. Avoid freeze / thaw cycles.	Host	Mouse
Applications	WB	Isotype	IgG1

Note: Centrifuge before opening to ensure complete recovery of vial contents.

Images



Western blotting with anti-V5-Tag monoclonal antibody at dilution of 1:1000. Lane 1: V5 tag transfected HEK 293 cell lysates, lane 2: HEK 293 whole cell lysate

Immunogen Information

Immunogen	Synthetic peptide corresponding to V5 tag conjugated to keyhole limpet haemocyanin.
Synonyms	GKPIPPELLGLDST tag, Protein Rev, V5 epitope tag, V5 epitope tag

Product Information

Calculated MW	40kDa
Observed MW	40kDa
Buffer	PBS with 0.02% sodium azide, 50% glycerol, pH 7.4
Purify	Protein A/G Purified
Clone No.	8E10
Dilution	WB: 1:1000-2000; IP: 3ug/sample; IF: 1:100-200

Background

The V5 epitope tag is derived from a small epitope (Pk) present on the P and V proteins of the paramyxovirus of simian virus (SV5). The V5 tag is usually used with all 14 amino acids (GKPIPPELLGLDST), although it has also been used with a shorter 9 amino acid sequence (IPNPELLGLD)

For Research Use Only

Thank you for your recent purchase.

If you would like to learn more about antibodies, please visit www.elabscience.com.

**Focus on your research
 Service for life science**

Applications: WB-Western Blot IHC-Immunohistochemistry IF-Immunofluorescence IP-Immunoprecipitation FC-Flow cytometry ChIP-Chromatin Immunoprecipitation Reactivity: H-Human R-Rat M-Mouse Mk-Monkey Dg-Dog Ch-Chicken Hm-Hamster Rb-Rabbit Sh-Sheep Pg-Pig Z-Zebrafish X-Xenopus C-Cow.