



SZABO SCANDIC

Part of Europa Biosite

Produktinformation



Forschungsprodukte & Biochemikalien



Zellkultur & Verbrauchsmaterial



Diagnostik & molekulare Diagnostik



Laborgeräte & Service

Weitere Information auf den folgenden Seiten!
See the following pages for more information!



Lieferung & Zahlungsart

siehe unsere [Liefer- und Versandbedingungen](#)

Zuschläge

- Mindermengenzuschlag
- Trockeneiszuschlag
- Gefahrgutzuschlag
- Expressversand

SZABO-SCANDIC HandelsgmbH

Quellenstraße 110, A-1100 Wien

T. +43(0)1 489 3961-0

F. +43(0)1 489 3961-7

mail@szabo-scandic.com

www.szabo-scandic.com

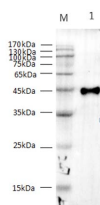
[linkedin.com/company/szaboscandic](https://www.linkedin.com/company/szaboscandic) 

Strep-Tag II Monoclonal Antibody

Catalog No.	E-AB-48009	Reactivity	All
Storage	Store at -20°C. Avoid freeze / thaw cycles.	Host	Mouse
Applications	WB	Isotype	IgG1

Note: Centrifuge before opening to ensure complete recovery of vial contents.

Images



Western Blotting of Strep II-Tag fused recombinant protein with Anti-Strep II mouse monoclonal antibody at dilution of 1:1000.

Immunogen Information

Immunogen	Synthetic peptide corresponding to Strep II tag conjugated to keyhole limpet haemocyanin.
Synonyms	Strep Tag II, Strep II

Product Information

Calculated MW	45kDa
Observed MW	45kDa
Buffer	PBS with 0.02% sodium azide, 50% glycerol,pH 7.4
Purify	Protein A/G Purified
Clone No.	4H10
Dilution	WB: 1:1000-2000

Background

The Strep-tag II is a synthetic peptide consisting of eight amino acids (WSHYPQFEK). This peptide sequence exhibits intrinsic affinity towards Strep-Tactin, a specifically engineered streptavidin and can be N- or C-terminally fused to recombinant protein. The Strep-tag II peptide was developed as an affinity tool for the purification of corresponding fusion proteins on streptavidin columns. The peptide recognizes the same pocket of streptavidin where the natural ligand is normally bound so that biotin or its chemical derivatives can be used for competitive elution.

For Research Use Only

Thank you for your recent purchase.
 If you would like to learn more about antibodies, please visit www.elabscience.com.

**Focus on your research
 Service for life science**

Applications:WB-Western Blot IHC-Immunohistochemistry IF-Immunofluorescence IP-Immunoprecipitation FC-Flow cytometry ChIP-Chromatin Immunoprecipitation Reactivity: H-Human R-Rat M-Mouse Mk-Monkey Dg-Dog Ch-Chicken Hm-Hamster Rb-Rabbit Sh-Sheep Pg-Pig Z-Zebrafish X-Xenopus C-Cow.