



SZABO SCANDIC

Part of Europa Biosite

Produktinformation



Forschungsprodukte & Biochemikalien



Zellkultur & Verbrauchsmaterial



Diagnostik & molekulare Diagnostik



Laborgeräte & Service

Weitere Information auf den folgenden Seiten!
See the following pages for more information!



Lieferung & Zahlungsart

siehe unsere [Liefer- und Versandbedingungen](#)

Zuschläge

- Mindermengenzuschlag
- Trockeneiszuschlag
- Gefahrgutzuschlag
- Expressversand

SZABO-SCANDIC HandelsgmbH

Quellenstraße 110, A-1100 Wien

T. +43(0)1 489 3961-0

F. +43(0)1 489 3961-7

mail@szabo-scandic.com

www.szabo-scandic.com

[linkedin.com/company/szaboscandic](https://www.linkedin.com/company/szaboscandic) 

alpha Tubulin Monoclonal Antibody

Catalog Number: E-AB-48012



Note: Centrifuge before opening to ensure complete recovery of vial contents.

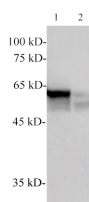
Description

Reactivity	Human, Mouse, E.coli, Scallop, Zebrafish
Immunogen	Recombinant human TUBA protein
Host	Mouse
Isotype	IgG2a
Clone	2H2
Purification	Protein A/G Purified
Conjugation	Unconjugated
Formulation	PBS with 0.02% sodium azide, 50% glycerol, pH 7.4

Applications Recommended Dilution

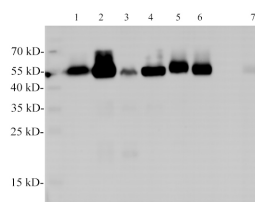
WB	1:2000-5000
-----------	-------------

Data

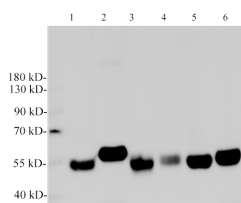


Western Blotting with anti-TUBA monoclonal antibody at dilution of 1:3000. Lane 1: Scallop Muscle lysates, Lane 2: Zebrafish lysates

Observed Mw:55kDa
Calculated Mw:55kDa



Western Blotting with anti-TUBA monoclonal antibody at dilution of 1:2000. Lane 1: Hela cell lysates, Lane 2: jurkat cell lysates, Lane, 3: 293T lysates, Lane 4: MCF-7 cell lysates, Lane 5: HT-29 cell lysates, Lane 6: HepG2 cell lysates, Lane 7: Rat kidney lysates



Western Blotting with anti-TUBA monoclonal antibody at dilution of 1:2000. Lane 1: NIH/3T3 cell lysates, Lane 2: Raw264.7 cell lysates, Lane 3: Mouse heart lysates, Lane 4: Mouse spleen lysates, Lane 5: Mouse brain lysates, Lane 6: Mouse kidney lysates

Preparation & Storage

Storage Store at -20°C. Avoid freeze / thaw cycles.

For Research Use Only

A Reliable Research Partner in Life Science and Medicine

Toll-free: 1-888-852-8623

Tel: 1-832-243-6086

Fax: 1-832-243-6017

Web: www.elabscience.com

Email: techsupport@elabscience.com

alpha Tubulin Monoclonal Antibody

Catalog Number: E-AB-48012



Background

Tubulin is a highly conserved $\alpha\beta$ dimeric protein present and is essential for all eukaryotes. $\alpha\beta$ -Tubulin dimers assemble into microtubules, dynamic polymers important in a variety of functions, most noticeably, mitosis. Tubulin assembly and disassembly are linked to guanosine triphosphate hydrolysis.

For Research Use Only

A Reliable Research Partner in Life Science and Medicine

Toll-free: 1-888-852-8623

Tel: 1-832-243-6086

Fax: 1-832-243-6017

Web: www.elabscience.com

Email: techsupport@elabscience.com