



# SZABO SCANDIC

Part of Europa Biosite

## Produktinformation



Forschungsprodukte & Biochemikalien



Zellkultur & Verbrauchsmaterial



Diagnostik & molekulare Diagnostik



Laborgeräte & Service

Weitere Information auf den folgenden Seiten!  
See the following pages for more information!



### Lieferung & Zahlungsart

siehe unsere [Liefer- und Versandbedingungen](#)

### Zuschläge

- Mindermengenzuschlag
- Trockeneiszuschlag
- Gefahrgutzuschlag
- Expressversand

### SZABO-SCANDIC HandelsgmbH

Quellenstraße 110, A-1100 Wien

T. +43(0)1 489 3961-0

F. +43(0)1 489 3961-7

[mail@szabo-scandic.com](mailto:mail@szabo-scandic.com)

[www.szabo-scandic.com](http://www.szabo-scandic.com)

[linkedin.com/company/szaboscandic](https://www.linkedin.com/company/szaboscandic) 

# beta Tubulin Monoclonal Antibody

Catalog Number: E-AB-48019



**Note:** Centrifuge before opening to ensure complete recovery of vial contents.

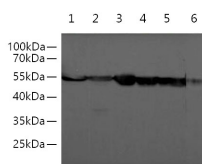
## Description

<b>Reactivity</b>	Human, Mouse, E.coli, Scallop, Zebrafish
<b>Immunogen</b>	Recombinant human TUBB protein
<b>Host</b>	Mouse
<b>Isotype</b>	IgG2a
<b>Clone</b>	3A7
<b>Purification</b>	Protein A/G Purified
<b>Conjugation</b>	Unconjugated
<b>Formulation</b>	PBS with 0.02% sodium azide, 50% glycerol, pH 7.4

## Applications Recommended Dilution

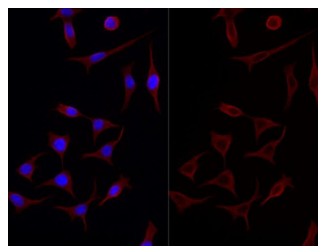
<b>WB</b>	1:5000-10000
<b>IF</b>	1:2000-4000

## Data



Western blotting with anti-Beta Tubulin monoclonal antibody at dilution of 1:5000. Lane 1: HeLa cell lysates, Lane 2: Caco-2 cell lysates, Lane 3: HT-29 cell lysates, Lane 4: NIH/3T3 cell lysates, Lane 5: Raw264.7 cell lysates, Lane 6: Rat liver

**Observed Mw:55kDa**  
**Calculated Mw:55kDa**



Immunofluorescent analysis of HEK293 cells with anti-beta Tubulin monoclonal antibody at dilution of 1:4000.

## Preparation & Storage

**Storage** Store at -20°C. Avoid freeze / thaw cycles.

## Background

In eukaryotes there are six members of the tubulin superfamily.  $\alpha$ - and  $\beta$ -tubulins polymerize into microtubules, a major component of the eukaryotic cytoskeleton. Microtubules function in many essential cellular processes, including mitosis. Both  $\alpha$  and  $\beta$  tubulins have a mass of around 50 kDa. Tubulin was long thought to be specific to eukaryotes. Beta-tubulin gene is commonly used as a loading control for western blot.

## For Research Use Only

A Reliable Research Partner in Life Science and Medicine

Toll-free: 1-888-852-8623

Web: [www.elabscience.com](http://www.elabscience.com)

Tel: 1-832-243-6086

Email: [techsupport@elabscience.com](mailto:techsupport@elabscience.com)

Fax: 1-832-243-6017