



# SZABO SCANDIC

Part of Europa Biosite

## Produktinformation



Forschungsprodukte & Biochemikalien



Zellkultur & Verbrauchsmaterial



Diagnostik & molekulare Diagnostik



Laborgeräte & Service

Weitere Information auf den folgenden Seiten!  
See the following pages for more information!



### Lieferung & Zahlungsart

siehe unsere [Liefer- und Versandbedingungen](#)

### Zuschläge

- Mindermengenzuschlag
- Trockeneiszuschlag
- Gefahrgutzuschlag
- Expressversand

### SZABO-SCANDIC HandelsgmbH

Quellenstraße 110, A-1100 Wien

T. +43(0)1 489 3961-0

F. +43(0)1 489 3961-7

[mail@szabo-scandic.com](mailto:mail@szabo-scandic.com)

[www.szabo-scandic.com](http://www.szabo-scandic.com)

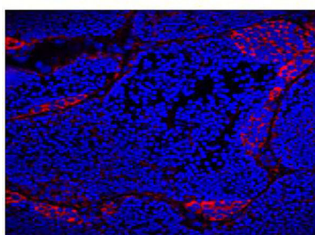
[linkedin.com/company/szaboscandic](https://www.linkedin.com/company/szaboscandic) 

## VASA Monoclonal Antibody

<b>Catalog No.</b>	E-AB-48026	<b>Reactivity</b>	G
<b>Storage</b>	Store at -20°C. Avoid freeze / thaw cycles.	<b>Host</b>	Mouse
<b>Applications</b>	IF	<b>Isotype</b>	IgG1

**Note:** Centrifuge before opening to ensure complete recovery of vial contents.

### Images



Immunofluorescence of frozen section of male Gibel carp gonads with anti-VASA mouse monoclonal antibody at dilution of 1:100.

### Immunogen Information

<b>Immunogen</b>	Recombinant Zebrafish VASA protein expressed by E.coli
<b>GeneID</b>	30263
<b>Swissprot</b>	O42107
<b>Synonyms</b>	DEAD (Asp-Glu-Ala-Asp) box polypeptide 4; ddx4; VAS

### Product Information

<b>Buffer</b>	PBS with 0.02% sodium azide, 50% glycerol, pH 7.4
<b>Purify</b>	ProteinA/G
<b>Clone No.</b>	7A11
<b>Dilution</b>	IF: 1:100-200

### Background

Vasa is an RNA binding protein with an ATP-dependent RNA helicase that is a member of the DEAD box family of proteins. The vasa gene, is essential for germ cell development and was first identified in *Drosophila melanogaster*, but has since been fo

#### For Research Use Only

Thank you for your recent purchase.

If you would like to learn more about antibodies, please visit [www.elabscience.com](http://www.elabscience.com).

**Focus on your research  
 Service for life science**

Applications: WB-Western Blot IHC-Immunohistochemistry IF-Immunofluorescence IP-Immunoprecipitation FC-Flow cytometry ChIP-Chromatin Immunoprecipitation Reactivity: H-Human R-Rat M-Mouse Mk-Monkey Dg-Dog Ch-Chicken Hm-Hamster Rb-Rabbit Sh-Sheep Pg-Pig Z-Zebrafish X-Xenopus C-Cow.