



# SZABO SCANDIC

Part of Europa Biosite

## Produktinformation



Forschungsprodukte & Biochemikalien



Zellkultur & Verbrauchsmaterial



Diagnostik & molekulare Diagnostik



Laborgeräte & Service

Weitere Information auf den folgenden Seiten!  
See the following pages for more information!



### Lieferung & Zahlungsart

siehe unsere [Liefer- und Versandbedingungen](#)

### Zuschläge

- Mindermengenzuschlag
- Trockeneiszuschlag
- Gefahrgutzuschlag
- Expressversand

### SZABO-SCANDIC HandelsgmbH

Quellenstraße 110, A-1100 Wien

T. +43(0)1 489 3961-0

F. +43(0)1 489 3961-7

[mail@szabo-scandic.com](mailto:mail@szabo-scandic.com)

[www.szabo-scandic.com](http://www.szabo-scandic.com)

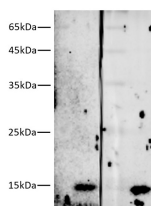
[linkedin.com/company/szaboscandic](https://www.linkedin.com/company/szaboscandic) 

## Streptavidin Monoclonal Antibody

<b>Catalog No.</b>	E-AB-48032	<b>Reactivity</b>	All
<b>Storage</b>	Store at -20°C. Avoid freeze / thaw cycles.	<b>Host</b>	Mouse
<b>Applications</b>	WB	<b>Isotype</b>	IgG1

**Note:** Centrifuge before opening to ensure complete recovery of vial contents.

### Images



Western blotting of 10ng Streptavidin (16kDa) with anti-Streptavidin mouse monoclonal antibody at dilution of lane 1: 1:5000, lane 2: 1:10000.

### Immunogen Information

<b>Immunogen</b>	Native Streptomyces Avidinii streptavidin protein
<b>Swissprot</b>	P22629
<b>Synonyms</b>	Avidin, Streptavidin, SA

### Product Information

<b>Calculated MW</b>	16kDa
<b>Observed MW</b>	16kDa
<b>Buffer</b>	PBS with 0.02% sodium azide, 50% glycerol,pH 7.4
<b>Purify</b>	Protein A/G Purified
<b>Clone No.</b>	1C4
<b>Dilution</b>	WB: 1:5000-10000

### Background

Streptavidin is a biotin-binding protein found in the culture broth of the bacterium Streptomyces. Streptavidin can bind to four moles of biotin per mole of protein with extremely high affinity, approximately 10,000-15,000 Da. Streptavidin lacks the carbohydrate side chains present on avidin and has an isoelectric point of 6.5 to avidin's 10 far closer to that at which most useful biological interactions occur. As a result, Streptavidin frequently exhibits much lower non-specific binding than avidin does.

#### For Research Use Only

Thank you for your recent purchase.

If you would like to learn more about antibodies, please visit [www.elabscience.com](http://www.elabscience.com).

**Focus on your research  
 Service for life science**

Applications:WB-Western Blot IHC-Immunohistochemistry IF-Immunofluorescence IP-Immunoprecipitation FC-Flow cytometry ChIP-Chromatin Immunoprecipitation Reactivity: H-Human R-Rat M-Mouse Mk-Monkey Dg-Dog Ch-Chicken Hm-Hamster Rb-Rabbit Sh-Sheep Pg-Pig Z-Zebrafish X-Xenopus C-Cow.