



SZABO SCANDIC

Part of Europa Biosite

Produktinformation



Forschungsprodukte & Biochemikalien



Zellkultur & Verbrauchsmaterial



Diagnostik & molekulare Diagnostik



Laborgeräte & Service

Weitere Information auf den folgenden Seiten!
See the following pages for more information!



Lieferung & Zahlungsart

siehe unsere [Liefer- und Versandbedingungen](#)

Zuschläge

- Mindermengenzuschlag
- Trockeneiszuschlag
- Gefahrgutzuschlag
- Expressversand

SZABO-SCANDIC HandelsgmbH

Quellenstraße 110, A-1100 Wien

T. +43(0)1 489 3961-0

F. +43(0)1 489 3961-7

mail@szabo-scandic.com

www.szabo-scandic.com

[linkedin.com/company/szaboscandic](https://www.linkedin.com/company/szaboscandic) 

PDCD1LG2 Polyclonal Antibody

Catalog Number: E-AB-91960



Note: Centrifuge before opening to ensure complete recovery of vial contents.

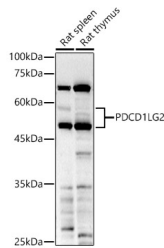
Description

| | |
|---------------------|---|
| Reactivity | Human, Mouse, Rat |
| Immunogen | A synthetic peptide of human PDCD1LG2 |
| Host | Rabbit |
| Isotype | IgG |
| Purification | Affinity purification |
| Conjugation | Unconjugated |
| Formulation | PBS with 0.05% proclin300, 50% glycerol, pH7.3. |

Applications Recommended Dilution

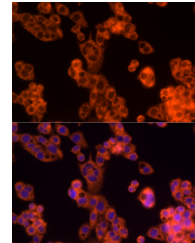
| | |
|-----------|--------------|
| WB | 1:500-1:2000 |
| IF | 1:50-1:200 |

Data

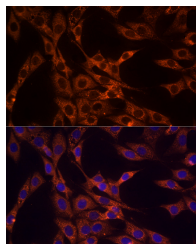


Western blot analysis of extracts of various cell lines using PDCD1LG2 Polyclonal Antibody at 1:1000 dilution.

Observed Mw: 45-60KDa



Immunofluorescence analysis of HepG2 cells using PDCD1LG2 Polyclonal Antibody at dilution of 1:50 (40x lens). Blue: DAPI for nuclear staining.



Immunofluorescence analysis of NIH/3T3 cells using PDCD1LG2 Polyclonal Antibody at dilution of 1:50 (40x lens). Blue: DAPI for nuclear staining.

Preparation & Storage

Storage Store at -20°C. Avoid freeze/thaw cycles.

Background

Programmed Death Ligand 2 (PD-L2), also known as B7-DC and butyrophilin-like protein, is a member of the B7 family of proteins that provide signals for regulating T-cell activation and tolerance. PD-L2 is expressed on dendritic cells, subsets of activated CD4⁺ and CD8⁺ T cells, and memory B cells that differentiate into plasma cells. At inflammatory

For Research Use Only

A Reliable Research Partner in Life Science and Medicine

Toll-free: 1-888-852-8623

Web: www.elabscience.com

Tel: 1-832-243-6086

Email: techsupport@elabscience.com

Fax: 1-832-243-6017

PDCD1LG2 Polyclonal Antibody

Catalog Number: E-AB-91960



sites such as rheumatoid arthritis, allergen exposure, and virus infection, PD-L2 is up-regulated on synoviocytes, infiltrating macrophages, dendritic cells, and airway epithelial cells. PD-L2, along with B7-H1/PD-L1, binds to T cell PD-1 where it promotes IFN-gamma production and CD40 Ligand up-regulation while inhibiting IL-4 production. In addition, PD-L2 binds to RGM-B on macrophages and alveolar epithelial cells, supporting respiratory immune tolerance. In asthma, PD-L2 suppresses IL-5 and IL-13 production, promotes IL-12 production by dendritic cells, and supports allergen-induced airway hyper-responsiveness and mucus production.

For Research Use Only

A Reliable Research Partner in Life Science and Medicine

Toll-free: 1-888-852-8623

Tel: 1-832-243-6086

Fax: 1-832-243-6017

Web: www.elabscience.com

Email: techsupport@elabscience.com