



SZABO SCANDIC

Part of Europa Biosite

Produktinformation



Forschungsprodukte & Biochemikalien



Zellkultur & Verbrauchsmaterial



Diagnostik & molekulare Diagnostik



Laborgeräte & Service

Weitere Information auf den folgenden Seiten!
See the following pages for more information!



Lieferung & Zahlungsart

siehe unsere [Liefer- und Versandbedingungen](#)

Zuschläge

- Mindermengenzuschlag
- Trockeneiszuschlag
- Gefahrgutzuschlag
- Expressversand

SZABO-SCANDIC HandelsgmbH

Quellenstraße 110, A-1100 Wien

T. +43(0)1 489 3961-0

F. +43(0)1 489 3961-7

mail@szabo-scandic.com

www.szabo-scandic.com

[linkedin.com/company/szaboscandic](https://www.linkedin.com/company/szaboscandic) 

SHOX Polyclonal Antibody

Catalog Number: E-AB-92160



Note: Centrifuge before opening to ensure complete recovery of vial contents.

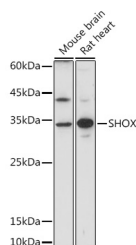
Description

Reactivity	Human, Mouse, Rat
Immunogen	Recombinant fusion protein of human SHOX
Host	Rabbit
Isotype	IgG
Purification	Affinity purification
Conjugation	Unconjugated
Formulation	PBS with 0.05% proclin300, 50% glycerol, pH7.3.

Applications Recommended Dilution

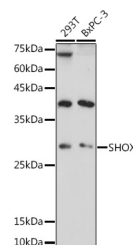
WB	1:500-1:2000
-----------	--------------

Data



Western blot analysis of extracts of various cell lines using SHOX Polyclonal Antibody at 1:1000 dilution.

Observed Mw: 32kDa
Calculated Mw: 25kDa/32kDa



Western blot analysis of extracts of various cell lines using SHOX Polyclonal Antibody at 1:1000 dilution.

Preparation & Storage

Storage Store at -20°C. Avoid freeze/thaw cycles.

Background

This gene belongs to the paired homeobox family and is located in the pseudoautosomal region 1 (PAR1) of X and Y chromosomes. Defects in this gene are associated with idiopathic growth retardation and in the short stature phenotype of Turner syndrome patients. This gene is highly conserved across species from mammals to fish to flies. Alternatively spliced transcript variants encoding different isoforms have been noted for this gene.

For Research Use Only

A Reliable Research Partner in Life Science and Medicine

Toll-free: 1-888-852-8623

Web: www.elabscience.com

Tel: 1-832-243-6086

Email: techsupport@elabscience.com

Fax: 1-832-243-6017