



SZABO SCANDIC

Part of Europa Biosite

Produktinformation



Forschungsprodukte & Biochemikalien



Zellkultur & Verbrauchsmaterial



Diagnostik & molekulare Diagnostik



Laborgeräte & Service

Weitere Information auf den folgenden Seiten!
See the following pages for more information!



Lieferung & Zahlungsart

siehe unsere [Liefer- und Versandbedingungen](#)

Zuschläge

- Mindermengenzuschlag
- Trockeneiszuschlag
- Gefahrgutzuschlag
- Expressversand

SZABO-SCANDIC HandelsgmbH

Quellenstraße 110, A-1100 Wien

T. +43(0)1 489 3961-0

F. +43(0)1 489 3961-7

mail@szabo-scandic.com

www.szabo-scandic.com

[linkedin.com/company/szaboscandic](https://www.linkedin.com/company/szaboscandic)

UFL1 Polyclonal Antibody

Catalog Number: E-AB-92278



Note: Centrifuge before opening to ensure complete recovery of vial contents.

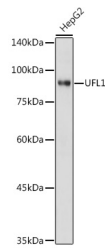
Description

Reactivity	Human, Mouse, Rat
Immunogen	Recombinant fusion protein of human UFL1
Host	Rabbit
Isotype	IgG
Purification	Affinity purification
Conjugation	Unconjugated
Formulation	PBS with 0.05% proclin300, 50% glycerol, pH7.3.

Applications Recommended Dilution

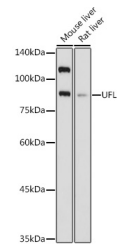
WB	1:500-1:2000
IF	1:50-1:200

Data

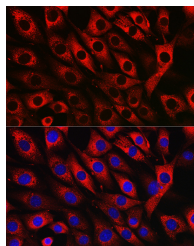


Western blot analysis of extracts of HepG2 cells using UFL1 Polyclonal Antibody at 1:1000 dilution.

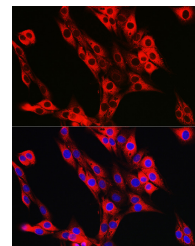
Observed Mw: 90 kDa
Calculated Mw: 89 kDa



Western blot analysis of extracts of various cell lines using UFL1 Polyclonal Antibody at 1:1000 dilution.



Immunofluorescence analysis of NIH/3T3 cells using UFL1 Polyclonal Antibody at dilution of 1:50 (40x lens). Blue: DAPI for nuclear staining.



Immunofluorescence analysis of PC-12 cells using UFL1 Polyclonal Antibody at dilution of 1:50 (40x lens). Blue: DAPI for nuclear staining.

Preparation & Storage

Storage Store at -20°C. Avoid freeze/thaw cycles.

Background

E3 protein ligase that mediates ufmylation, the covalent attachment of the ubiquitin-like modifier UFM1 to lysine residues on target proteins, and which plays a key role in reticulophagy (also called ER-phagy induced in response to endoplasmic reticulum stress. In response to endoplasmic reticulum stress, recruited to the endoplasmic reticulum

For Research Use Only

A Reliable Research Partner in Life Science and Medicine

Toll-free: 1-888-852-8623

Web: www.elabscience.com

Tel: 1-832-243-6086

Email: techsupport@elabscience.com

Fax: 1-832-243-6017

UFL1 Polyclonal Antibody

Catalog Number: E-AB-92278



membrane by DDRGK1, and mediates ufmylation of proteins such as RPN1 and RPL26/uL24, thereby promoting reticulophagy of endoplasmic reticulum sheets. Ufmylation-dependent reticulophagy inhibits the unfolded protein response (UPR via ERN1/IRE1-alpha. Ufmylation in response to endoplasmic reticulum stress is essential for processes such as hematopoiesis, blood vessel morphogenesis or inflammatory response. Regulates inflammation in response to endoplasmic reticulum stress by promoting reticulophagy, leading to inhibit the activity of the NF-kappa-B transcription factor (By similarity).

For Research Use Only

A Reliable Research Partner in Life Science and Medicine

Toll-free: 1-888-852-8623

Tel: 1-832-243-6086

Fax: 1-832-243-6017

Web: www.elabscience.com

Email: techsupport@elabscience.com