



SZABO SCANDIC

Part of Europa Biosite

Produktinformation



Forschungsprodukte & Biochemikalien



Zellkultur & Verbrauchsmaterial



Diagnostik & molekulare Diagnostik



Laborgeräte & Service

Weitere Information auf den folgenden Seiten!
See the following pages for more information!



Lieferung & Zahlungsart

siehe unsere [Liefer- und Versandbedingungen](#)

Zuschläge

- Mindermengenzuschlag
- Trockeneiszuschlag
- Gefahrgutzuschlag
- Expressversand

SZABO-SCANDIC HandelsgmbH

Quellenstraße 110, A-1100 Wien

T. +43(0)1 489 3961-0

F. +43(0)1 489 3961-7

mail@szabo-scandic.com

www.szabo-scandic.com

[linkedin.com/company/szaboscandic](https://www.linkedin.com/company/szaboscandic) 

Timm29 Polyclonal Antibody

Catalog Number:E-AB-92321



Note: Centrifuge before opening to ensure complete recovery of vial contents.

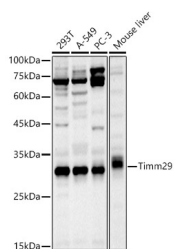
Description

| | |
|---------------------|---|
| Reactivity | Human,Mouse |
| Immunogen | Recombinant fusion protein of mouse Timm29 |
| Host | Rabbit |
| Isotype | IgG |
| Purification | Affinity purification |
| Conjugation | Unconjugated |
| Formulation | PBS with 0.05% proclin300,50% glycerol,pH7.3. |

Applications Recommended Dilution

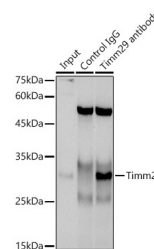
| | |
|-----------|--------------|
| WB | 1:500-1:2000 |
| IP | 1:50-1:200 |

Data



Western blot analysis of extracts of various cell lines using Timm29 Polyclonal Antibody at 1:1000 dilution.

Observed Mw:29KDa
Calculated Mw:29kDa



Immunoprecipitation analysis of 300ug extracts of A-549 cells using 3ug Timm29 Polyclonal Antibody. Western blot was performed from the immunoprecipitate using Timm29 Polyclonal Antibody at a dilution of 1:1000.

Preparation & Storage

Storage Store at -20°C. Avoid freeze/thaw cycles.

Background

Component of the TIM22 complex, a complex that mediates the import and insertion of multi-pass transmembrane proteins into the mitochondrial inner membrane. The TIM22 complex forms a twin-pore translocase that uses the membrane potential as the external driving force. Required for the stability of the TIM22 complex and functions in the assembly of the TIMM22 protein into the TIM22 complex. May facilitate cooperation between TIM22 and TOM complexes by interacting with TOMM40.

For Research Use Only

A Reliable Research Partner in Life Science and Medicine

Toll-free: 1-888-852-8623

Web: www.elabscience.com

Tel: 1-832-243-6086

Email: techsupport@elabscience.com

Fax: 1-832-243-6017