



# SZABO SCANDIC

Part of Europa Biosite

## Produktinformation



Forschungsprodukte & Biochemikalien



Zellkultur & Verbrauchsmaterial



Diagnostik & molekulare Diagnostik



Laborgeräte & Service

Weitere Information auf den folgenden Seiten!  
See the following pages for more information!



### Lieferung & Zahlungsart

siehe unsere [Liefer- und Versandbedingungen](#)

### Zuschläge

- Mindermengenzuschlag
- Trockeneiszuschlag
- Gefahrgutzuschlag
- Expressversand

### SZABO-SCANDIC HandelsgmbH

Quellenstraße 110, A-1100 Wien

T. +43(0)1 489 3961-0

F. +43(0)1 489 3961-7

[mail@szabo-scandic.com](mailto:mail@szabo-scandic.com)

[www.szabo-scandic.com](http://www.szabo-scandic.com)

[linkedin.com/company/szaboscandic](https://www.linkedin.com/company/szaboscandic) 

# COG7 Polyclonal Antibody

Catalog Number: E-AB-92629



**Note:** Centrifuge before opening to ensure complete recovery of vial contents.

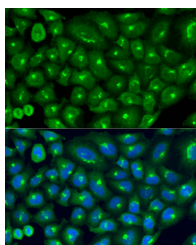
## Description

|                     |  |
|---------------------|--|
| <b>Reactivity</b>   | Human  |
| <b>Immunogen</b>    | Recombinant fusion protein of human COG7           |
| <b>Host</b>         | Rabbit   |
| <b>Isotype</b>      | IgG  |
| <b>Purification</b> | Affinity purification                              |
| <b>Conjugation</b>  | Unconjugated                                       |
| <b>Formulation</b>  | PBS with 0.02% sodium azide, 50% glycerol, pH 7.3. |

## Applications Recommended Dilution

|           |            |
|-----------|------------|
| <b>IF</b> | 1:50-1:200 |
|-----------|------------|

## Data



Immunofluorescence analysis of U2OS cells using COG7 Polyclonal Antibody at dilution of 1:100 (40x lens). Blue: DAPI for nuclear staining.

**Calculated Mw: 86kDa**

## Preparation & Storage

**Storage** Store at -20°C. Avoid freeze/thaw cycles.

## Background

The protein encoded by this gene resides in the Golgi, and constitutes one of the 8 subunits of the conserved oligomeric Golgi (COG) complex, which is required for normal Golgi morphology and localization. Mutations in this gene are associated with the congenital disorder of glycosylation type IIe.

## For Research Use Only

A Reliable Research Partner in Life Science and Medicine

Toll-free: 1-888-852-8623

Web: [www.elabscience.com](http://www.elabscience.com)

Tel: 1-832-243-6086

Email: [techsupport@elabscience.com](mailto:techsupport@elabscience.com)

Fax: 1-832-243-6017