



SZABO SCANDIC

Part of Europa Biosite

Produktinformation



Forschungsprodukte & Biochemikalien



Zellkultur & Verbrauchsmaterial



Diagnostik & molekulare Diagnostik



Laborgeräte & Service

Weitere Information auf den folgenden Seiten!
See the following pages for more information!



Lieferung & Zahlungsart

siehe unsere [Liefer- und Versandbedingungen](#)

Zuschläge

- Mindermengenzuschlag
- Trockeneiszuschlag
- Gefahrgutzuschlag
- Expressversand

SZABO-SCANDIC HandelsgmbH

Quellenstraße 110, A-1100 Wien

T. +43(0)1 489 3961-0

F. +43(0)1 489 3961-7

mail@szabo-scandic.com

www.szabo-scandic.com

[linkedin.com/company/szaboscandic](https://www.linkedin.com/company/szaboscandic) 

PRAP1 Polyclonal Antibody

Catalog Number: E-AB-92911



Note: Centrifuge before opening to ensure complete recovery of vial contents.

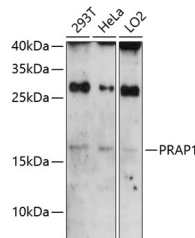
Description

Reactivity	Human
Immunogen	Recombinant fusion protein of human PRAP1
Host	Rabbit
Isotype	IgG
Purification	Affinity purification
Conjugation	Unconjugated
Formulation	PBS with 0.01% thiomersal, 50% glycerol, pH 7.3.

Applications Recommended Dilution

WB	1:500-1:2000
-----------	--------------

Data



Western blot analysis of extracts of various cell lines using PRAP1 Polyclonal Antibody at 1:3000 dilution.

Observed MW: 17kDa

Calculated Mw: 10kDa/16kDa/17kDa

Preparation & Storage

Storage Store at -20°C. Avoid freeze/thaw cycles.

Background

Lipid-binding protein which promotes lipid absorption by facilitating MTTP-mediated lipid transfer (mainly triglycerides and phospholipids) and MTTP-mediated apoB lipoprotein assembly and secretion (By similarity). Protects the gastrointestinal epithelium from irradiation-induced apoptosis (By similarity). May play an important role in maintaining normal growth homeostasis in epithelial cells. Involved in p53/TP53-dependent cell survival after DNA damage. May downregulate the expression of MAD1L1 and exert a suppressive role in mitotic spindle assembly checkpoint in hepatocellular carcinomas.

For Research Use Only

A Reliable Research Partner in Life Science and Medicine

Toll-free: 1-888-852-8623

Web: www.elabscience.com

Tel: 1-832-243-6086

Email: techsupport@elabscience.com

Fax: 1-832-243-6017