



SZABO SCANDIC

Part of Europa Biosite

Produktinformation



Forschungsprodukte & Biochemikalien



Zellkultur & Verbrauchsmaterial



Diagnostik & molekulare Diagnostik



Laborgeräte & Service

Weitere Information auf den folgenden Seiten!
See the following pages for more information!



Lieferung & Zahlungsart

siehe unsere [Liefer- und Versandbedingungen](#)

Zuschläge

- Mindermengenzuschlag
- Trockeneiszuschlag
- Gefahrgutzuschlag
- Expressversand

SZABO-SCANDIC HandelsgmbH

Quellenstraße 110, A-1100 Wien

T. +43(0)1 489 3961-0

F. +43(0)1 489 3961-7

mail@szabo-scandic.com

www.szabo-scandic.com

[linkedin.com/company/szaboscandic](https://www.linkedin.com/company/szaboscandic) 

ZCCHC8 Polyclonal Antibody

Catalog Number: E-AB-92972



Note: Centrifuge before opening to ensure complete recovery of vial contents.

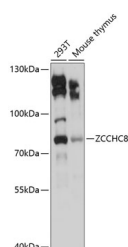
Description

Reactivity	Human, Mouse
Immunogen	Recombinant fusion protein of human ZCCHC8
Host	Rabbit
Isotype	IgG
Purification	Affinity purification
Conjugation	Unconjugated
Formulation	PBS with 0.01% thiomersal, 50% glycerol, pH7.3.

Applications Recommended Dilution

WB	1:500-1:2000
-----------	--------------

Data



Western blot analysis of extracts of various cell lines using ZCCHC8 Polyclonal Antibody at 1:3000 dilution.

Observed MW: 78kDa

Calculated Mw: 51kDa/78kDa

Preparation & Storage

Storage Store at -20°C. Avoid freeze/thaw cycles.

Background

This gene encodes a scaffold protein which serves as an accessory factor to the nuclear RNA exosome complex. The encoded protein forms a trimeric human nuclear exosome targeting (NEXT) complex, together with hMTR4 and the RNA-binding factor RBM7 which promotes the exosomal degradation of non-coding promoter-upstream transcripts, enhancer RNAs and 3'-extended products of histone- and small nuclear RNA transcription. This complex is also thought to recruit the exosome to degrade intronic RNAs via its interaction with both the exosome and the spliceosome. It contains both an N-terminal zinc-knuckle domain and a C-terminal proline-rich domain.

For Research Use Only

A Reliable Research Partner in Life Science and Medicine

Toll-free: 1-888-852-8623

Web: www.elabscience.com

Tel: 1-832-243-6086

Email: techsupport@elabscience.com

Fax: 1-832-243-6017