



# SZABO SCANDIC

Part of Europa Biosite

## Produktinformation



Forschungsprodukte & Biochemikalien



Zellkultur & Verbrauchsmaterial



Diagnostik & molekulare Diagnostik



Laborgeräte & Service

Weitere Information auf den folgenden Seiten!  
See the following pages for more information!



### Lieferung & Zahlungsart

siehe unsere [Liefer- und Versandbedingungen](#)

### Zuschläge

- Mindermengenzuschlag
- Trockeneiszuschlag
- Gefahrgutzuschlag
- Expressversand

### SZABO-SCANDIC HandelsgmbH

Quellenstraße 110, A-1100 Wien

T. +43(0)1 489 3961-0

F. +43(0)1 489 3961-7

[mail@szabo-scandic.com](mailto:mail@szabo-scandic.com)

[www.szabo-scandic.com](http://www.szabo-scandic.com)

[linkedin.com/company/szaboscandic](https://www.linkedin.com/company/szaboscandic) 

# ONECUT1 Polyclonal Antibody

Catalog Number: E-AB-92976



**Note:** Centrifuge before opening to ensure complete recovery of vial contents.

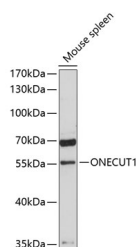
## Description

|                     |                                                  |
|---------------------|--------------------------------------------------|
| <b>Reactivity</b>   | Human, Mouse                                     |
| <b>Immunogen</b>    | Recombinant fusion protein of human ONECUT1      |
| <b>Host</b>         | Rabbit                                           |
| <b>Isotype</b>      | IgG                                              |
| <b>Purification</b> | Affinity purification                            |
| <b>Conjugation</b>  | Unconjugated                                     |
| <b>Formulation</b>  | PBS with 0.01% thiomersal, 50% glycerol, pH 7.3. |

## Applications Recommended Dilution

|           |              |
|-----------|--------------|
| <b>WB</b> | 1:200-1:2000 |
|-----------|--------------|

## Data



Western blot analysis of extracts of mouse spleen using ONECUT1 Polyclonal Antibody at 1:3000 dilution.

**Observed MW: 55kDa**  
**Calculated Mw: 51kDa**

## Preparation & Storage

**Storage** Store at -20°C. Avoid freeze/thaw cycles.

## Background

This gene encodes a member of the Cut homeobox family of transcription factors. Expression of the encoded protein is enriched in the liver, where it stimulates transcription of liver-expressed genes, and antagonizes glucocorticoid-stimulated gene transcription. This gene may influence a variety of cellular processes including glucose metabolism, cell cycle regulation, and it may also be associated with cancer. Alternative splicing results in multiple transcript variants.

## For Research Use Only

A Reliable Research Partner in Life Science and Medicine

Toll-free: 1-888-852-8623

Web: [www.elabscience.com](http://www.elabscience.com)

Tel: 1-832-243-6086

Email: [techsupport@elabscience.com](mailto:techsupport@elabscience.com)

Fax: 1-832-243-6017