



SZABO SCANDIC

Part of Europa Biosite

Produktinformation



Forschungsprodukte & Biochemikalien



Zellkultur & Verbrauchsmaterial



Diagnostik & molekulare Diagnostik



Laborgeräte & Service

Weitere Information auf den folgenden Seiten!
See the following pages for more information!



Lieferung & Zahlungsart

siehe unsere [Liefer- und Versandbedingungen](#)

Zuschläge

- Mindermengenzuschlag
- Trockeneiszuschlag
- Gefahrgutzuschlag
- Expressversand

SZABO-SCANDIC HandelsgmbH

Quellenstraße 110, A-1100 Wien

T. +43(0)1 489 3961-0

F. +43(0)1 489 3961-7

mail@szabo-scandic.com

www.szabo-scandic.com

[linkedin.com/company/szaboscandic](https://www.linkedin.com/company/szaboscandic) 

Kdm6b Polyclonal Antibody

Catalog Number:E-AB-93092



Note: Centrifuge before opening to ensure complete recovery of vial contents.

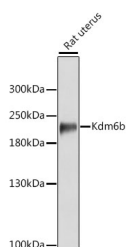
Description

Reactivity	Rat
Immunogen	Recombinant fusion protein of mouse Kdm6b
Host	Rabbit
Isotype	IgG
Purification	Affinity purification
Conjugation	Unconjugated
Formulation	PBS with 0.01% thiomersal,50% glycerol,pH7.3.

Applications Recommended Dilution

WB	1:500-1:2000
-----------	--------------

Data



Western blot analysis of extracts of various cell lines using Kdm6b Polyclonal Antibody at 1:3000 dilution.

Observed MW:200kDa

Calculated Mw:176kDa

Preparation & Storage

Storage Store at -20°C. Avoid freeze/thaw cycles.

Background

Enables beta-catenin binding activity; histone H3-tri/di-methyl-lysine-27 demethylase activity; and sequence-specific DNA binding activity. Involved in several processes, including histone H3-K27 demethylation; mesodermal cell differentiation; and positive regulation of cold-induced thermogenesis. Acts upstream of or within several processes, including cellular response to hydrogen peroxide; histone demethylation; and positive regulation of transcription by RNA polymerase II. Located in nucleus. Is expressed in several structures, including brain; gut; liver; metanephros; and olfactory epithelium. Orthologous to human KDM6B (lysine demethylase 6B).

For Research Use Only

A Reliable Research Partner in Life Science and Medicine

Toll-free: 1-888-852-8623

Web: www.elabscience.com

Tel: 1-832-243-6086

Email: techsupport@elabscience.com

Fax: 1-832-243-6017