



# SZABO SCANDIC

Part of Europa Biosite

## Produktinformation



Forschungsprodukte & Biochemikalien



Zellkultur & Verbrauchsmaterial



Diagnostik & molekulare Diagnostik



Laborgeräte & Service

Weitere Information auf den folgenden Seiten!  
See the following pages for more information!



### Lieferung & Zahlungsart

siehe unsere [Liefer- und Versandbedingungen](#)

### Zuschläge

- Mindermengenzuschlag
- Trockeneiszuschlag
- Gefahrgutzuschlag
- Expressversand

### SZABO-SCANDIC HandelsgmbH

Quellenstraße 110, A-1100 Wien

T. +43(0)1 489 3961-0

F. +43(0)1 489 3961-7

[mail@szabo-scandic.com](mailto:mail@szabo-scandic.com)

[www.szabo-scandic.com](http://www.szabo-scandic.com)

[linkedin.com/company/szaboscandic](https://www.linkedin.com/company/szaboscandic) 

**Note:** Centrifuge before opening to ensure complete recovery of vial contents.

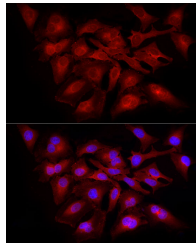
## Description

<b>Reactivity</b>	Human, Mouse
<b>Immunogen</b>	Recombinant protein of mouse RELA
<b>Host</b>	Rabbit
<b>Isotype</b>	IgG
<b>Purification</b>	Affinity purification
<b>Conjugation</b>	Unconjugated
<b>Formulation</b>	PBS with 0.05% proclin300, 50% glycerol, pH7.3.

## Applications Recommended Dilution

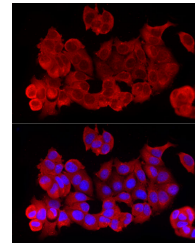
<b>IF</b>	1:50-1:200
-----------	------------

## Data

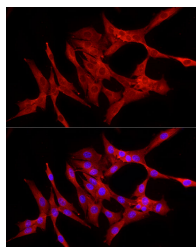


Immunofluorescence analysis of HeLa cells using RELA Polyclonal Antibody at dilution of 1:100 (40x lens). Blue: DAPI for nuclear staining.

**Calculated Mw: 60kDa**



Immunofluorescence analysis of MCF7 cells using RELA Polyclonal Antibody at dilution of 1:100 (40x lens). Blue: DAPI for nuclear staining.



Immunofluorescence analysis of NIH/3T3 cells using RELA Polyclonal Antibody at dilution of 1:100 (40x lens). Blue: DAPI for nuclear staining.

## Preparation & Storage

**Storage** Store at -20°C. Avoid freeze/thaw cycles.

## Background

Enables several functions, including DNA-binding transcription factor activity, RNA polymerase II-specific; actinin binding activity; and ankyrin repeat binding activity. Involved in several processes, including negative regulation of protein sumoylation; postsynapse to nucleus signaling pathway; and regulation of transcription, DNA-templated. Acts upstream of or within several processes, including cellular response to hepatocyte growth factor stimulus; cellular response

## For Research Use Only

A Reliable Research Partner in Life Science and Medicine

Toll-free: 1-888-852-8623

Web: [www.elabscience.com](http://www.elabscience.com)

Tel: 1-832-243-6086

Email: [techsupport@elabscience.com](mailto:techsupport@elabscience.com)

Fax: 1-832-243-6017

# RELA Polyclonal Antibody

Catalog Number: E-AB-93364



to lipopolysaccharide; and positive regulation of interleukin-12 production. Located in several cellular components, including chromatin; cytosol; and glutamatergic synapse. Is expressed in several structures, including alimentary system; early conceptus; genitourinary system; musculature; and skin. Human ortholog(s) of this gene implicated in ductal carcinoma in situ; lung non-small cell carcinoma; lymphoma; and renal cell carcinoma. Orthologous to human RELA (RELA proto-oncogene, NF-kB subunit).

---

## For Research Use Only

A Reliable Research Partner in Life Science and Medicine

Toll-free: 1-888-852-8623

Tel: 1-832-243-6086

Fax: 1-832-243-6017

Web: [www.elabscience.com](http://www.elabscience.com)

Email: [techsupport@elabscience.com](mailto:techsupport@elabscience.com)