



SZABO SCANDIC

Part of Europa Biosite

Produktinformation



Forschungsprodukte & Biochemikalien



Zellkultur & Verbrauchsmaterial



Diagnostik & molekulare Diagnostik



Laborgeräte & Service

Weitere Information auf den folgenden Seiten!
See the following pages for more information!



Lieferung & Zahlungsart

siehe unsere [Liefer- und Versandbedingungen](#)

Zuschläge

- Mindermengenzuschlag
- Trockeneiszuschlag
- Gefahrgutzuschlag
- Expressversand

SZABO-SCANDIC HandelsgmbH

Quellenstraße 110, A-1100 Wien

T. +43(0)1 489 3961-0

F. +43(0)1 489 3961-7

mail@szabo-scandic.com

www.szabo-scandic.com

[linkedin.com/company/szaboscandic](https://www.linkedin.com/company/szaboscandic) 

Elab Fluor® Violet 450 Anti-Mouse CD22 Antibody[Cy34.1]

Catalog No.	E-AB-F1021Q	Reactivity	Mouse
Storage	Store at 2~8°C, Avoid freeze / thaw cycles	Applications	FCM

Important Note: Centrifuge before opening to ensure complete recovery of vial contents.

Antigen Information

Alternate Names	B-cell receptor CD22,Cd22,B-lymphocyte cell adhesion molecule,BL-CAM,Sialic acid-binding Ig-like lectin 2,Siglec-2,T-cell surface antigen Leu-14,CD22,Lyb-8, Siglec2
Uniprot ID	P35329
Gene ID	12483
Background	The Cy34.1 monoclonal antibody specifically binds to the B-lymphocyte differentiation antigen CD22 on strains having the Lyb-8.2 alloantigen (e.g., A, BALB/c, CBA, C3H/He, C57BL, C57L, C58, SJL, SWR, but not AKR, DBA/1, DBA/2, NZB, PL). CD22 is expressed at high levels on mature peripheral B lymphocytes (follicular and marginal zone), B-1 cells (CD5+ B cells), and plasma cells. It is a member of the Ig gene superfamily and associates with the B-cell antigen receptor. Its sialic acid- binding immunoglobulin-like lectin (siglec) extracellular region mediates B-cell adhesion to ligands on endothelial cells in the bone marrow. Its intracellular domain is phosphorylated after cross-linking of antigen receptor or MHC class II antigen. It is involved in negative regulation of B-cell activation and protection from autoimmunity. B-cell proliferative responses to LPS or anti-mouse Ig μ chain are augmented in the presence of Cy34.1 mAb.

Product Details

Form	Liquid
Size	50Tests/100Tests/100Tests×2
Clone No.	Cy34.1
Host	Mouse
Isotype	Mouse IgG1, κ
Reactivity	Mouse
Application	FCM
Isotype Control	Elab Fluor® Violet 450 Mouse IgG1, κ Isotype Control[MOPC-21] [Product E-AB-F09792Q]
Storage Buffer	Phosphate buffered solution, pH 7.2, containing 0.09% stabilizer and 1% protein protectant.
Shipping	Biological ice pack at 4 °C
Stability & Storage	Keep as concentrated solution. Store at 2~8°C and protected from prolonged exposure to light.Do not freeze. This product is guaranteed up to one year from purchase.

For Research Use Only

Fluorophore

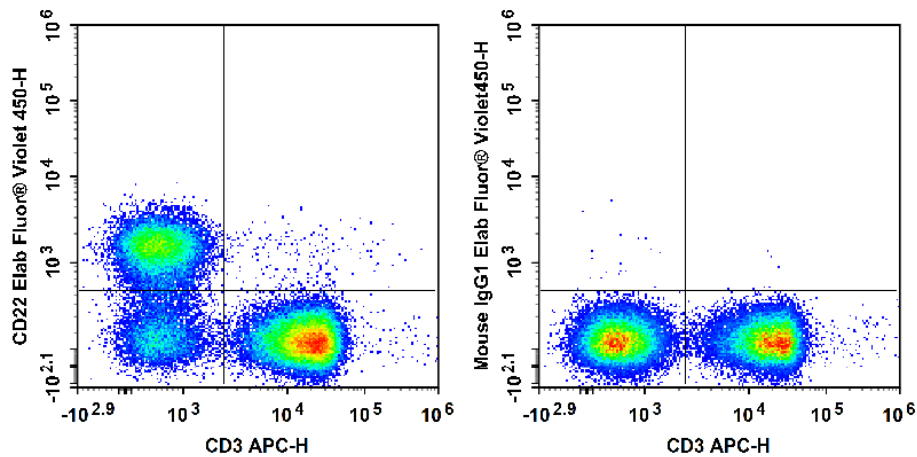
Conjugation: Elab Fluor® Violet 450

Elab Fluor® Violet 450 is designed to be excited by the violet laser (405 nm) and detected using an optical filter centered near 450 nm (e.g., a 450/45 nm bandpass filter).

Recommended usage

Each lot of this antibody is quality control tested by flow cytometric analysis. **The amount of the reagent is suggested to be used 5 µL of antibody per test (million cells in 100 µL staining volume or per 100 µL of whole blood).** Please check your vial before the experiment. Since applications vary, the appropriate dilutions must be determined for individual use.

Product data



C57BL/6 murine splenocytes are stained with APC Anti-Mouse CD3 Antibody and Elab Fluor® Violet 450 Anti-Mouse CD22 Antibody (Left). Splenocytes are stained with APC Anti-Mouse CD3 Antibody and Elab Fluor® Violet 450 Mouse IgG1, κ Isotype Control (Right).

Related Information

1. Sample Preparation for Flow Cytometry <https://www.elabscience.com/List-detail-5594.html>
2. Staining Cell Surface Targets for Flow Cytometry <https://www.elabscience.com/List-detail-5568.html>
3. Flow Cytometry Troubleshooting Tips <https://www.elabscience.com/List-detail-5593.html>
4. How to select the appropriate detection channel through the spectrogram? <https://www.elabscience.com/List-detail-459742.html>