



# SZABO SCANDIC

Part of Europa Biosite

## Produktinformation



Forschungsprodukte & Biochemikalien



Zellkultur & Verbrauchsmaterial



Diagnostik & molekulare Diagnostik



Laborgeräte & Service

Weitere Information auf den folgenden Seiten!  
See the following pages for more information!



### Lieferung & Zahlungsart

siehe unsere [Liefer- und Versandbedingungen](#)

### Zuschläge

- Mindermengenzuschlag
- Trockeneiszuschlag
- Gefahrgutzuschlag
- Expressversand

### SZABO-SCANDIC HandelsgmbH

Quellenstraße 110, A-1100 Wien

T. +43(0)1 489 3961-0

F. +43(0)1 489 3961-7

[mail@szabo-scandic.com](mailto:mail@szabo-scandic.com)

[www.szabo-scandic.com](http://www.szabo-scandic.com)

[linkedin.com/company/szaboscandic](https://www.linkedin.com/company/szaboscandic) 

## PE Anti-Human CD2 Antibody[RPA-2.10]

|                    |  |                     |       |
|--------------------|--|---------------------|-------|
| <b>Catalog No.</b> | E-AB-F1375D                                | <b>Reactivity</b>   | Human |
| <b>Storage</b>     | Store at 2~8°C, Avoid freeze / thaw cycles | <b>Applications</b> | FCM   |

**Important Note:** Centrifuge before opening to ensure complete recovery of vial contents.

### Antigen Information

|                        |  |
|------------------------|--|
| <b>Alternate Names</b> | T-cell surface antigen CD2,Erythrocyte receptor,LFA-2,LFA-3R,T11/Leu-5   |
| <b>Uniprot ID</b>      | P06729   |
| <b>Gene ID</b>         | 914  |
| <b>Background</b>      | CD2 is a 50 kD type I transmembrane glycoprotein also known as LFA-2, T11, and sheep red blood cell receptor (SRBC-R). This immunoglobulin superfamily member is expressed on thymocytes, T lymphocytes, NK cells, and thymic B cell subsets. The major ligand for CD2 is CD58 (also known as LFA-3). CD2 has also been reported to bind CD48, CD59, and CD15. CD2 plays a critical role in alternative T cell activation, T cell signaling, and cell-cell adhesion. |

### Product Details

|                                |  |
|--------------------------------|--|
| <b>Form</b>                    | Liquid   |
| <b>Size</b>                    | 20Tests/100Tests/100Tests×2  |
| <b>Clone No.</b>               | RPA-2.10   |
| <b>Host</b>                    | Mouse  |
| <b>Isotype</b>                 | Mouse IgG1, κ  |
| <b>Reactivity</b>              | Human  |
| <b>Application</b>             | FCM  |
| <b>Isotype Control</b>         | <a href="#">PE Mouse IgG1, κ Isotype Control[MOPC-211]</a> <a href="#">[Product E-AB-F09792D]</a>  |
| <b>Storage Buffer</b>          | Phosphate buffered solution, pH 7.2, containing 0.09% stabilizer and 1% protein protectant.  |
| <b>Shipping</b>                | Biological ice pack at 4 °C  |
| <b>Stability &amp; Storage</b> | Keep as concentrated solution.<br>Store at 2~8°C and protected from prolonged exposure to light.Do not freeze.<br>This product is guaranteed up to one year from purchase. |

### For Research Use Only

## Fluorophore

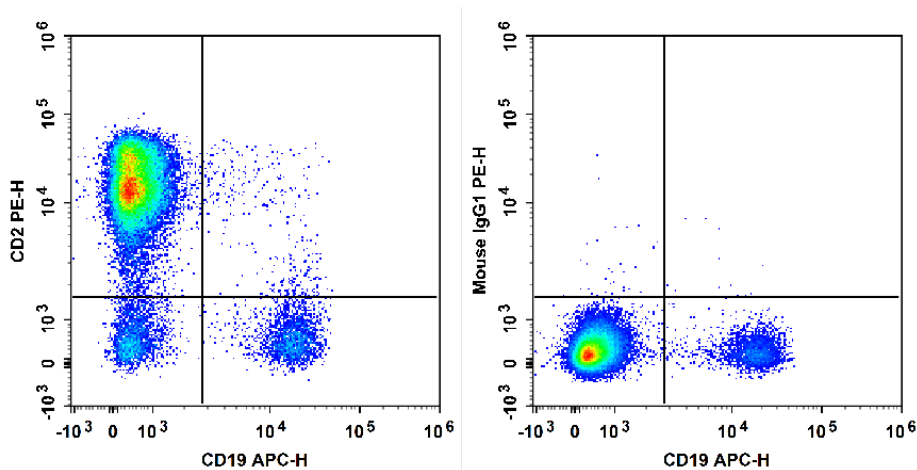
**Conjugation:** PE

PE is designed to be excited by the Blue (488 nm), Green (532 nm) and Yellow-Green (561 nm) lasers and detected using an optical filter centered near 575 nm (e.g., a 585/42 nm bandpass filter).

## Recommended usage

Each lot of this antibody is quality control tested by flow cytometric analysis. **The amount of the reagent is suggested to be used 5  $\mu$ L of antibody per test (million cells in 100  $\mu$ L staining volume or per 100  $\mu$ L of whole blood).** Please check your vial before the experiment. Since applications vary, the appropriate dilutions must be determined for individual use.

## Product data



Human peripheral blood lymphocytes are stained with APC Anti-human CD19 Antibody and PE Anti-Human CD2 Antibody[RPA-2.10] (Left). Lymphocytes are stained with APC Anti-human CD19 Antibody and PE Mouse IgG1,  $\kappa$  Isotype Control (Right).

## Related Information

1. Sample Preparation for Flow Cytometry <https://www.elabscience.com/List-detail-5594.html>
2. Staining Cell Surface Targets for Flow Cytometry <https://www.elabscience.com/List-detail-5568.html>
3. Flow Cytometry Troubleshooting Tips <https://www.elabscience.com/List-detail-5593.html>
4. How to select the appropriate detection channel through the spectrogram? <https://www.elabscience.com/List-detail-459742.html>