



SZABO SCANDIC

Part of Europa Biosite

Produktinformation



Forschungsprodukte & Biochemikalien



Zellkultur & Verbrauchsmaterial



Diagnostik & molekulare Diagnostik



Laborgeräte & Service

Weitere Information auf den folgenden Seiten!
See the following pages for more information!



Lieferung & Zahlungsart

siehe unsere [Liefer- und Versandbedingungen](#)

Zuschläge

- Mindermengenzuschlag
- Trockeneiszuschlag
- Gefahrgutzuschlag
- Expressversand

SZABO-SCANDIC HandelsgmbH

Quellenstraße 110, A-1100 Wien

T. +43(0)1 489 3961-0

F. +43(0)1 489 3961-7

mail@szabo-scandic.com

www.szabo-scandic.com

[linkedin.com/company/szaboscandic](https://www.linkedin.com/company/szaboscandic) 

Anti-Human CD19-FITC/CD56-PE/CD3-PE/Cyanine7/CD45-PerCP Cocktail

Catalog No.	E-AB-FC0011	Reactivity	Human
Storage	Store at 2~8°C, Avoid freeze / thaw cycles	Applications	FCM

Important Note: Centrifuge before opening to ensure complete recovery of vial contents.

Antigen Information

Background

This product is a FCM antibody cocktail made up of FITC Anti-Human CD19 [Clone: CB19] (Mouse IgG1, κ), PE Anti-Human CD56 Antibody [Clone: 5.1H11] (Mouse IgG1, κ), PE/Cyanine7 Anti-Human CD3 Antibody [Clone: OKT-3] (Mouse IgG2a, κ) and PerCP Anti-Human CD45 Antibody [Clone: HI30] (Mouse IgG1, κ).

CD19 is a single-chain transmembrane glycoprotein expressed on B cells of all stages except plasma cells. It is a common marker for B cells. CD19 is also expressed in follicular dendritic cells. It forms complex with CD21 and CD84, which forms co-receptor with BCR. It takes part in B cell development, activation and differentiation.

CD56 is also called neural cell adhesion molecule (NCAM), expressed on neurons, glia and skeletal muscle cells. In hematopoietic cells, CD56 is also expressed on NK cells and NKT cells. CD56 can be used to detect NK cells, γ/δ T cells and activated CD8+ cells.

CD3 is a heterotetrameric protein consisting of a CD3γ, a CD3δ and 2 CD3ε. It forms complex with TCR. OKT-3 recognizes human CD3ε. Human CD3 is expressed on the surface of T cells and NKT cells.

CD45 is a single-chain type I transmembrane glycoprotein. Except for erythrocytes and platelets, CD45 is expressed on nearly all of the hematopoietic cells with high level. It is a common marker for blood leukocytes. CD45 is a receptor type protein tyrosine phosphatase and plays essential roles in B cell and T cell signaling.

Product Details

Size	20Tests/100Tests/100Tests×2
Clone No.	CB19,5.1H11,OKT-3,HI30
Reactivity	Human
Application	FCM
Storage Buffer	Phosphate buffered solution, pH 7.2, containing 0.09% stabilizer and 1% protein protectant.
Shipping	Biological ice pack at 4 °C
Stability & Storage	Keep as concentrated solution. Store at 2~8°C and protected from prolonged exposure to light. Do not freeze. This product is guaranteed up to one year from purchase.

For Research Use Only

Fluorophore

Conjugation: FITC,PE,PE/Cyanine7,PerCP

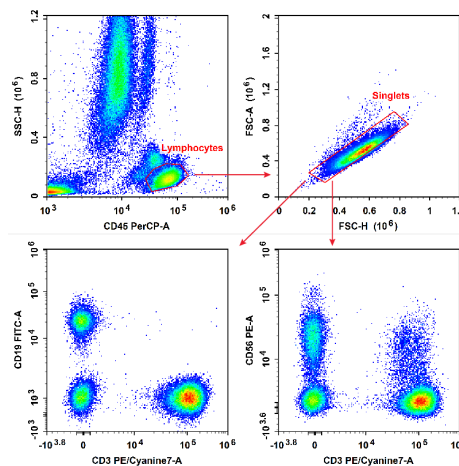
FITC is designed to be excited by the Blue laser (488 nm) and detected using an optical filter centered near 530 nm (e.g., a 525/40 nm bandpass filter). PE is designed to be excited by the Blue (488 nm), Green (532 nm) and Yellow-Green (561 nm) lasers and detected using an optical filter centered near 575 nm (e.g., a 585/42 nm bandpass filter). PE/Cyanine7 is designed to be excited by the Blue (488 nm), Green (532 nm) and yellow-green (561 nm) lasers and detected using an optical filter centered near 775 nm (e.g., a 780/60 nm bandpass filter). PerCP is designed to be excited by the blue laser (488 nm) and detected using an optical filter centered near 675 nm (e.g., a 690/50 nm bandpass filter).

Recommended usage

For whole blood samples, add 5 μ L Anti-Human CD19-FITC/CD56-PE/CD3-PE/Cyanine7/CD45-PerCP Cocktail to 100 μ L anticoagulant-treated blood sample. Mix and incubate the sample at 4°C in the dark for 30 min. Remove red blood cells with RBC lysis solution following the manufacturer's instruction. Wash the cell with cell staining buffer and discard the supernatant after centrifugation at 300 g for 5 min. Resuspend the cells with 200 μ L cell staining buffer and load the sample on flow cytometer for detection.

For other samples, 1×10^6 dissociated single cells are centrifuged at 300 g for 5 min with the supernatant discarded. Resuspend the cells with 100 μ L cell staining buffer and add 5 μ L Anti-Human CD19-FITC/CD56-PE/CD3-PE/Cyanine7/CD45-PerCP Cocktail. Mix and incubate the sample at 4°C in the dark for 30 min. Add cell staining buffer to each tube, centrifuge at 300 g for 5 min and discard the supernatant. Resuspend the cells with 200 μ L cell staining buffer and load the sample on flow cytometer for detection.

Product data



Human peripheral blood lymphocytes are stained with Anti-Human CD19-FITC/CD56-PE/CD3-PE/Cyanine7/CD45-PerCP Cocktail.

Related Information

1. Sample Preparation for Flow Cytometry <https://www.elabscience.com/List-detail-5594.html>
2. Staining Cell Surface Targets for Flow Cytometry <https://www.elabscience.com/List-detail-5568.html>
3. Flow Cytometry Troubleshooting Tips <https://www.elabscience.com/List-detail-5593.html>
4. How to select the appropriate detection channel through the spectrogram? <https://www.elabscience.com/List-detail-459742.html>

For Research Use Only