



SZABO SCANDIC

Part of Europa Biosite

Produktinformation



Forschungsprodukte & Biochemikalien



Zellkultur & Verbrauchsmaterial



Diagnostik & molekulare Diagnostik



Laborgeräte & Service

Weitere Information auf den folgenden Seiten!
See the following pages for more information!



Lieferung & Zahlungsart

siehe unsere [Liefer- und Versandbedingungen](#)

Zuschläge

- Mindermengenzuschlag
- Trockeneiszuschlag
- Gefahrgutzuschlag
- Expressversand

SZABO-SCANDIC HandelsgmbH

Quellenstraße 110, A-1100 Wien

T. +43(0)1 489 3961-0

F. +43(0)1 489 3961-7

mail@szabo-scandic.com

www.szabo-scandic.com

[linkedin.com/company/szaboscandic](https://www.linkedin.com/company/szaboscandic) 

Recombinant Human CDK2 Protein (E.coli, His Tag)



Catalog Number:PDEH100009

Note: Centrifuge before opening to ensure complete recovery of vial contents.

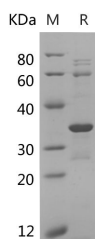
Description

Synonyms	Cyclin-Dependent Kinase 2;Cell Division Protein Kinase 2;p33 Protein Kinase;CDK2;CDKN2
Species	Human
Expression Host	E.coli
Sequence	Met 1-Leu298
Accession	P24941
Calculated Molecular Weight	36.1 kDa
Observed molecular weight	34 kDa
Tag	N-His

Properties

Purity	> 90 % as determined by reducing SDS-PAGE.
Endotoxin	< 1.0 EU per µg of the protein as determined by the LAL method.
Storage	Generally, lyophilized proteins are stable for up to 12 months when stored at -20 to -80°C. Reconstituted protein solution can be stored at 4-8°C for 2-7 days. Aliquots of reconstituted samples are stable at < -20°C for 3 months.
Shipping	This product is provided as lyophilized powder which is shipped with ice packs.
Formulation	Lyophilized from sterile PBS, pH 7.4., 5% trehalose, 5% mannitol, 0.01% tween-80. Normally 5 % - 8 % trehalose, mannitol and 0.01% Tween80 are added as protectants before lyophilization. Please refer to the specific buffer information in the print
Reconstitution	Please refer to the printed manual for detailed information.

Data



> 90 % as determined by reducing SDS-PAGE.

Background

Cyclin-dependent kinase 2 (CDK2) belongs to the cyclin-dependent kinase of Ser/Thr protein kinase. CDK2 acts as a catalytic subunit of the cyclin dependent kinase complex, whose activity is restricted to the G1-S phase of the cell cycle, it is essential for the G1/S transition. The kinase activity of CDK2 can be regulated by the association with a cyclin subunit, its phosphorylation state and CDK inhibitors. The activation of the CDK2/cyclin complex requires the phosphorylation of Thr160 and the dephosphorylation of Try14 and Tyr15. The inhibition of CDK2-cyclin complex can also be attributed to association with p27Kip1 and p21Waf1/Cip1. The activation of CDK2 has been shown to be necessary for apoptosis of quiescent cells, such as neurons, thymocytes and endothelial cells.

For Research Use Only

A Reliable Research Partner in Life Science and Medicine

Toll-free: 1-888-852-8623

Web: www.elabscience.com

Tel: 1-832-243-6086

Email: techsupport@elabscience.com

Fax: 1-832-243-6017