



SZABO SCANDIC

Part of Europa Biosite

Produktinformation



Forschungsprodukte & Biochemikalien



Zellkultur & Verbrauchsmaterial



Diagnostik & molekulare Diagnostik



Laborgeräte & Service

Weitere Information auf den folgenden Seiten!
See the following pages for more information!



Lieferung & Zahlungsart

siehe unsere [Liefer- und Versandbedingungen](#)

Zuschläge

- Mindermengenzuschlag
- Trockeneiszuschlag
- Gefahrgutzuschlag
- Expressversand

SZABO-SCANDIC HandelsgmbH

Quellenstraße 110, A-1100 Wien

T. +43(0)1 489 3961-0

F. +43(0)1 489 3961-7

mail@szabo-scandic.com

www.szabo-scandic.com

[linkedin.com/company/szaboscandic](https://www.linkedin.com/company/szaboscandic) 

Recombinant Human KRT7 Protein (His Tag)

Catalog Number:PDEH100020



Note: Centrifuge before opening to ensure complete recovery of vial contents.

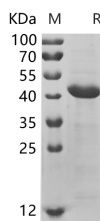
Description

Synonyms	CK 7;CK-7;CK7;Cytokeratin 7;Cytokeratin-7;D15Wsu77e;K2C7;K2C7;K7;Keratin 7;Keratin 7;type II;Keratin type II cytoskeletal 7;Keratin;55K type II cytoskeletal;Keratin;simple epithelial;Keratin;simple epithelial type I;K7;Keratin;type II cytoskeletal 7;Keratin-7;Krt2-7;KRT7;MGC11625;MGC12973 1;MGC3625;Sarcolectin;SCL;Type II mesothelial keratin K7;Type-II keratin Kb7
Species	Human
Expression Host	E.coli
Sequence	Glu91-Asp469
Accession	P08729-1
Calculated Molecular Weight	42 kDa
Observed molecular weight	44.3 kDa
Tag	N-His

Properties

Purity	> 90 % as determined by reducing SDS-PAGE.
Endotoxin	Please contact us for more information.
Storage	Generally, lyophilized proteins are stable for up to 12 months when stored at -20 to -80°C. Reconstituted protein solution can be stored at 4-8°C for 2-7 days. Aliquots of reconstituted samples are stable at < -20°C for 3 months.
Shipping	This product is provided as lyophilized powder which is shipped with ice packs.
Formulation	Lyophilized from sterile PBS, pH 7.4. Normally 5 % - 8 % trehalose, mannitol and 0.01% Tween80 are added as protectants before lyophilization. Please refer to the specific buffer information in the printed manual.
Reconstitution	Please refer to the printed manual for detailed information.

Data



> 90 % as determined by reducing SDS-PAGE.

Background

Keratins are a large family of proteins that form the intermediate filament cytoskeleton of epithelial cells, which are classified into two major sequence types. Type I keratins are a group of acidic intermediate filament proteins, including K9–K23, and the hair keratins Ha1–Ha8. Type II keratins are the basic or neutral counterparts to the acidic type I keratins, including K1–K8, and the hair keratins, Hb1–Hb6. KRT7, also named as cytokeratin 7, is one member of type II

For Research Use Only

A Reliable Research Partner in Life Science and Medicine

Toll-free: 1-888-852-8623

Tel: 1-832-243-6086

Fax: 1-832-243-6017

Web: www.elabscience.com

Email: techsupport@elabscience.com

Recombinant Human KRT7 Protein (His Tag)

Catalog Number:PDEH100020



basic cytokeratin. It is specifically expressed in the simple epithelia lining the cavities of the internal organs and in the gland ducts and blood vessels, and their neoplasms. KRT7 is marker of epithelial tissues, but not present in carcinomas of stratified squamous cell origin. This antibody is specifically against KRT7.

For Research Use Only

A Reliable Research Partner in Life Science and Medicine

Toll-free: 1-888-852-8623

Tel: 1-832-243-6086

Fax: 1-832-243-6017

Web: www.elabscience.com

Email: techsupport@elabscience.com